

extremis[®]



Desire

COMMITTED

to

TO

inspire

CONNECT

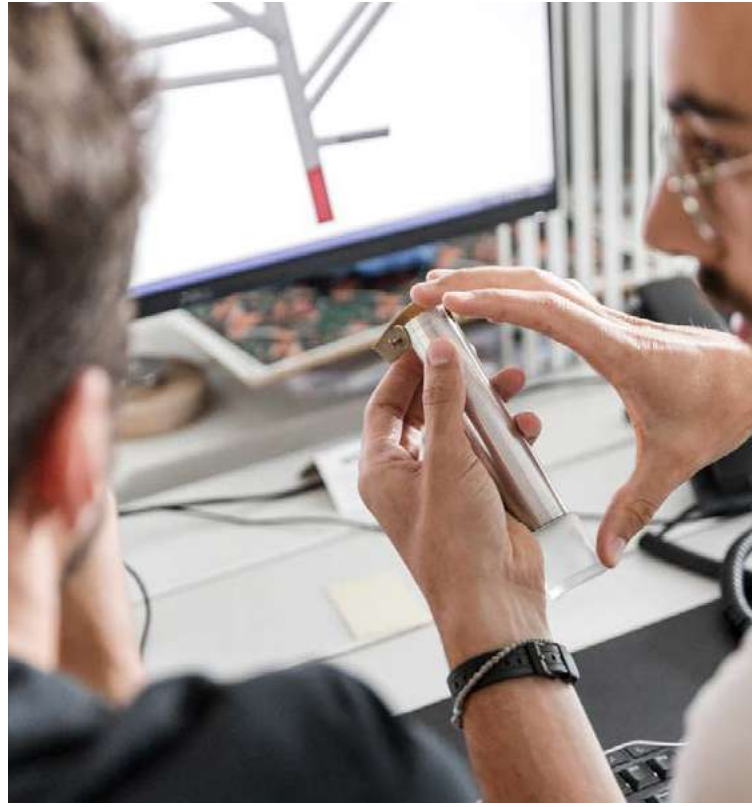
Useful, necessary beauty

*Creating designs that last by
inspiring interactions that matter*

Some objects have the power to change our lives in ways we could never anticipate. They inspire and challenge us to look at the world from a different angle, to interact with it to the fullest. That's exactly what Extremis is all about: transforming radical ideas into game-changing designs. Designs that are not only useful, necessary and beautiful, but also spark meaningful connections and enhance the way we interact with one another.

The result? An Extremis piece that you will love for a lifetime, something to pass on to the next generations.







Immortal ideas with a positive impact

At Extremis, we only start developing an idea if it's both necessary and useful. An idea that answers a basic need, offers a solution, and makes you look at things differently. Only those strong ideas have the ability to ripple outward and span decades, rather than years. From that point on, we shape the idea to inspire the future and create the best possible impact.



Carefully designed with lasting materials

To maximize that impact, we employ only the highest quality materials and cutting-edge processes. Designed locally, logically and ecologically we create strong and durable products that are ready for the future, carefully made in Belgium. Every minute of the design process, we do our absolute best to achieve the highest level of eco-efficiency by reducing transport volumes and waste. So, every tool for togetherness has a long history, even before it's used by you.

However, the best way to make a product last is to make it beautiful. Only this way it will spark memories and experiences that are as beautiful as life itself.



Togetherness all around the world

What started in tiny Belgium with “tools for togetherness”, has, with a branch in the US and a basecamp in Japan, grown into a full “tour for togetherness” reaching all corners of the world.

Smart, durably designed furniture is appreciated in every market. With clients ranging from corporations, to educational facilities, healthcare suppliers, hospitality caterers, and city administrations, Extremis is loved worldwide.



Our

TOOLS

treasured

FOR

collections

TOGETHERNESS



TABLE OF CONTENTS

Corporate — 16

- INTERMEZZO **Creating places for job fulfillment** — 26
- IN-DEPTH LOOK **AFAS *Experience Center*** — 53
- INTERVIEW **Creating an outdoor experience at work *Bart Hoes*** — 60
- IN-DEPTH LOOK **Alheembouw *State-of-the-art office building*** — 65

Education — 76

- INTERMEZZO **Changing today's way of thinking** — 82
- IN-DEPTH LOOK **University of Leiden *An echo between "Silence please" and "Science please"*** — 93

Healthcare — 104

- INTERMEZZO **Healing people through design** — 108
- IN-DEPTH LOOK **AZ Zeno *A futuristic hospital building*** — 115
- INTERVIEW **Thoughtful choices from A to Z *CEO Pieterjan Vermoortel*** — 118

Hospitality — 126

- INTERMEZZO **Inspiring interactions that matter** — 136
- IN-DEPTH LOOK **Bar Bernard *Rooftop bar & terrace of Brewery St. Bernardus*** — 153

(Semi) public — 170

- INTERMEZZO **Designing for all places** — 176
- IN-DEPTH LOOK **Hiroshima *Unique and safe public seating*** — 183

At Extremis — 196

- INTERMEZZO **Leading by example** — 204

CHAPTER 1

Corporate

Concentrating on the job is a lot easier when you're in the right workspace. Add innovative design and natural playfulness into your workday to create a dedicated space that suits you best. Extremis bolsters each moment, whether it's furnishing a co-working space with comfortable new desks, setting up the lunchroom with tables that spark conversation, or creating an office terrace to host after-work drinks. Cheer up your workdays with human-centered furniture, both indoors and outdoors.





Why not work outdoors? While providing a human-centric experience you also offer a safe and healthy extension to the traditional office. An outdoor workspace that's not just meant for dining or short coffee breaks, but for real heads down working.

Look at this beautiful terrace of the PwC auditing and consultancy company overlooking the town of **Lucerne, Switzerland**. It offers an outdoor workspace fit for every aspect of the workday: open-air meetings, informal gatherings, sunny calls, safe job interviews, you name it! The **Pantagruel picnic tables** with **Inumbrina** shades keep each workday refreshing!



The Omniplan architects worked closely with the Billingsley Company to develop the offices of Cypress Water in **Dallas, Texas**. The **Marina combo** helped create a true sense of place, supported by a diversity of uses.



As an agent for international high-end design brands, Burik & Burik advises and supports Dutch architects and interior designers with their projects. On their own office terrace, they have opted for a **Hopper picnic AA** to take work outdoors, a decision we wholeheartedly support!

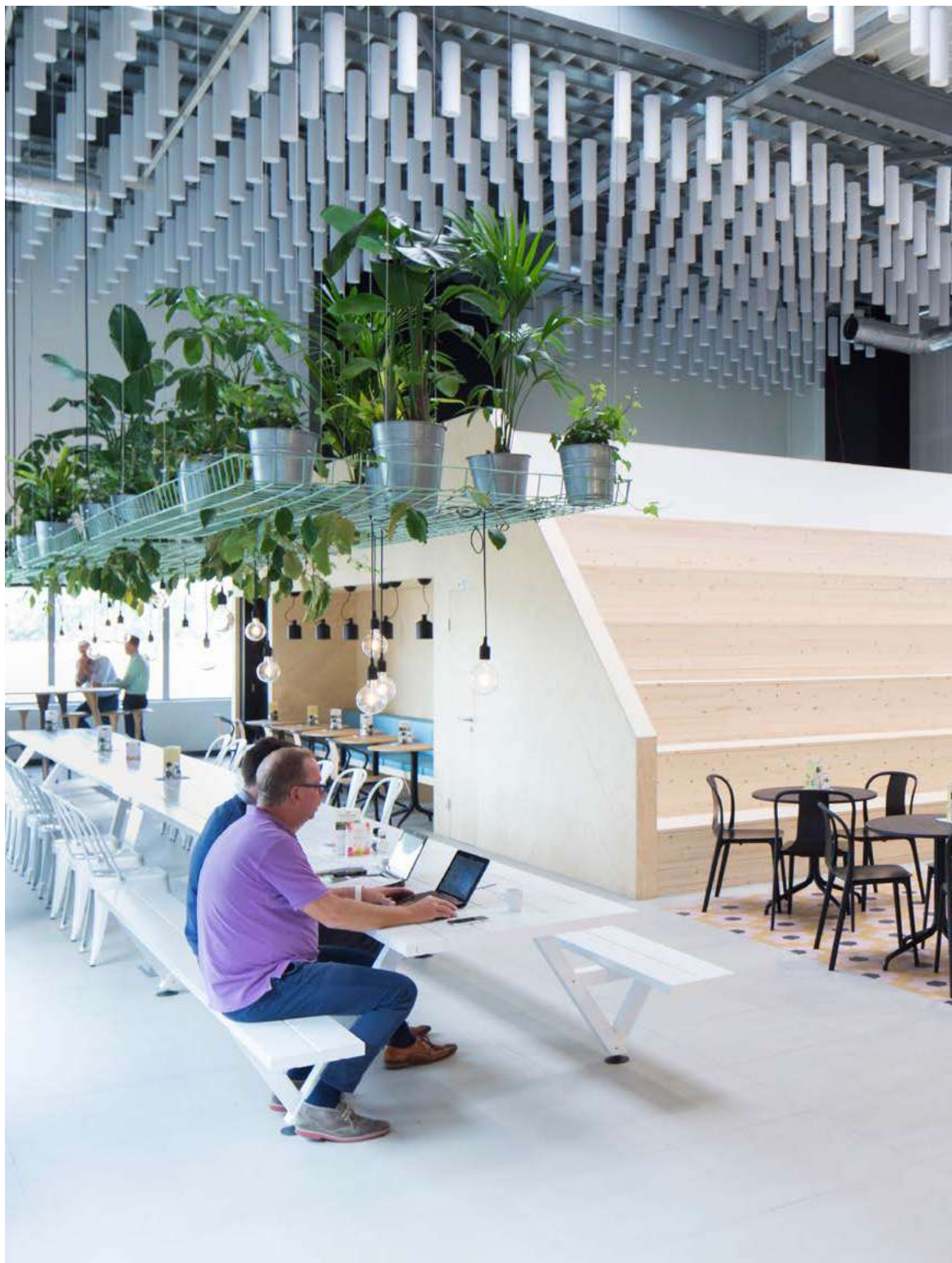


Google's super-headquarters in **London** feature a series of indoor and outdoor workspaces, including outdoor balconies and rooftop gardens that allow employees to grow veggies and herbs! The planted rooftop is undeniably the most enviable feature of this new corporate campus. In keeping with Google's in-house policy, no toxic materials were used and the floors and furniture pieces, including our **Hoppers with shade**, are made using certified wood.





3,400 people, 91 nationalities, and 35 different languages. This unique working campus in **Athens, Greece**, is a true multi-cultural melting pot. KN Group took this diversity of cultures as inspiration for the architecture and design, constructing six buildings representing each continent of the planet. The choice of material, color, form, and texture celebrates the differences in culture, while also bringing together people from across six continents at gorgeous **Pantagruel picnic tables** under **Inumbra shades**.



The Trinseo factory lunchroom in the Netherlands is not your dull, everyday canteen - it's more like a contemporary coffee shop. The **Marina combo** table is perfect for teamwork or for a team lunch.

Just like Extremis, Gravelart helps people create beautiful outdoor spaces! They offer innovative, soil-related products. The green offices - equipped with a heat pump and solar panels - also look and feel great thanks to **Extremis Marina** furniture.



Creating places for job fulfillment

The future of the office never looked so bright. The one-size-fits-all era is finally over and thoughtful, intentional design is here to stay with employee wellbeing and collaboration leading the way. The office will become a place where like-minded people get together on their own terms, sharing ideas and building energy for the larger goal. It will be the place where you meet people, experience belonging to the company, and feel the social and collaborative aspect of your job.

A natural extension to the office

The fact that nature nurtures is well established. Closed office spaces with stifling air conditioning often become a burden. While adding plants, big windows, and green walls is beneficial, it's no substitute for the real soothing effects of nature.

Why not go the extra mile and instead of bringing greenery into the office, give people access to real nature? Blur the lines between inside and outside with office terraces, decks enclosed by nature, accessible rooftops, and gardens.

"Work" is cited as the biggest barrier to spending time outside, but what if we combined nature and work? And created an outdoor workspace that's not just meant for dining or short coffee breaks, but also for creation, collaboration, and real heads down working?

"The office of the future expands outside the four walls of the building - right into nature."

An office on demand

The first step is breaking down barriers about what outdoor spaces can be. Not every person nor every task requires the same setup. By offering a palette of different workspaces, you create surroundings that align with each task and mindset.

These spaces will inspire rather than just serve as furniture in the office, and with the right tools, opportunities are endless.

We've created three sample formats built on what employees might want to achieve at work:



Create, Connect, Collaborate

The office has never had a greater purpose than as a place to connect with colleagues. Being outdoors promotes socialization and contributes to happiness in the workplace, creativity, and problem solving.



Get tables that host large groups, access screens, and boost creativity via colors and shapes.



Rest, Recover and Nourish

Spaces for recovery and nourishment accommodate a new change of pace in the workplace. 'Rest is best' will be the new mantra in the next generation workforce.



Lounge furniture as somewhere to put your feet up, tables to share stories, and natural materials to fill your cup with nature.



Fresh and Focused Work

Working outdoors doesn't have to be for a full 8-hour workday. A focused space for 30 minutes of sorting through emails, a quick creative sprint, or catching up on busy work takes you a long way.



Comfortable furniture, access to power, lights, shade, and internet are key for a good working posture.



Building on two decades of experience with over 1,250 projects across a wide range of industries, Creax is an established expert on innovation. Did you know that by offering several places to sit in the office, innovative companies stimulate their employees' creativity?

While a long **Marina picnic table** brings colleagues together over lunch, two height-adjustable **AMAI tables** support creative and constructive meetings.

cre·ax

[intelligence | innovation |







With a surface area of 66,500 m², the Herman Teirlinck building on the Tour & Taxis site in **Brussels** is the largest passive building in Belgium. Strategically placed in the gardens alongside the lush vegetation are a number of Extremis' **Hopper combo and benches** to create the perfect place to take a break from work and recharge.



With lush greenery, an organic wooden ceiling, and round **Kosmos** sofas that support a moment of repose, this office in **Japan** is anything but a traditional workplace. Employees get to choose from a diversity of seating postures to suit everybody's mindset.



Happy employees make happy customers, which is why "work hard, play hard" is the motto of Carglass. In the office, the company aims to make every employee feel at home and included. Mamu Architects-and-more included some outdoor patios with **Hopper picnics** to add to a healthy work environment.



InSitu develops innovative workspaces that reflect quality, efficiency, and flexibility to concentrate on each task to the fullest. This outdoor terrace for Airbus in **Toulouse, France**, brings employees together to unwind and collaborate in a refreshing setting.





This creative hub in **the Netherlands** offers advice, training and a workshop to any interior creator and maker. But that's not all, the bright foyer also offers a place to share ideas and let creativity flow. And what better way to let ideas brew than seated at these colorful **Viruses**?



At Deltalight, the good ideas aren't just developed at traditional office desks. In the middle of a glass courtyard they've set up a few **Virus** tables to brainstorm and convey new designs and concepts. Fresh air, a little sunshine and the fun of the compact Virus table are enough to infect everyone with creativity.



Nero Botanica in **Japan** houses stylish restaurants, adorable gift shops and trendy office spaces. The semi-pyramid-type building, made from black stone, is reminiscent of the coal mine mountain Bota. The extraordinary building is surrounded by a narrow strip of water and several **Kosmos** table-seat combinations.





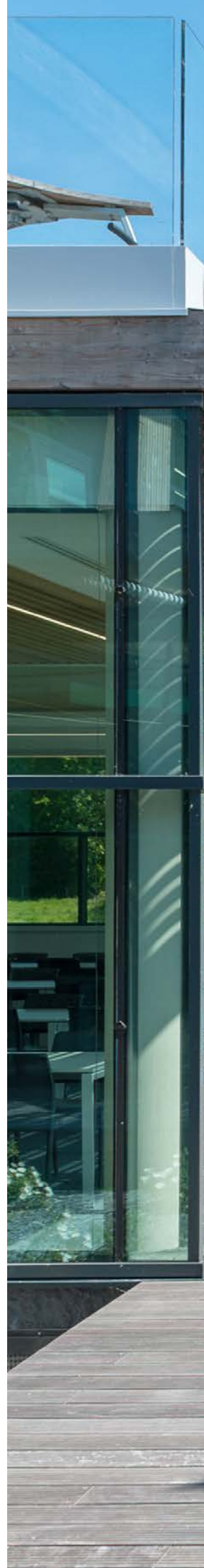
Who said industrial buildings and nature don't get along? This office in **Michigan, United States**, shows that even with concrete floors, brick walls and rusty windows a space can stay connected to nature. The varied planting and the use of wood and natural sunlight make this place pure and less man-made. The **Romeo & Juliet** bench acts as a biophilic space divider that serves as both plant and bench.



At this former Austrian convent, the surrounding green nature and designer furniture creates a peaceful sanctuary used today for meetings, seminars and networking. With different types of seating possibilities such as **Walrus** and **Gargantua** long meetings never become tedious.



The Delta Dore headquarters in **Bonnemain, France**, has some lovely terraces with a view over the adjoining pond. Each terrace features a different kind of furniture that sparks togetherness. At the **Abachus** cocktail tables employees can enjoy an after-work drink, while the **Virus** tables are the perfect spot for lunch.







Outside the premises of the **Flemish television broadcaster Medialaan** there is plenty of space to brainstorm, lunch, chat, relieve stress, and bounce with fresh ideas for new television shows. Both the **Hopper picnic** and the **Pantagruel picnic** tables are finished off with matching black parasols: **Inumbra** and **Hopper shade** give a classy, elegant look that's never out of style.



The sky-high mirror façade on the new city hall in Hasselt, Belgium certainly draws the eye... and gets you dreaming. The rooftop terrace is surrounded by plants and flowers and gives amazing views of the city. The **Pantagruel picnic tables** invite you to take in the scene in a cozy and comfortable way.





The **Abachus**, **Pantagruel picnic** and **Romeo & Juliet** on the balcony of Crosswater's new HQ allow the staff to take a breath of fresh air and soak up some sun. The 131,400 square foot building, at the Bridge site in Dartford, United Kingdom, provides consolidated logistics, office and storage space as well as a trade showroom.

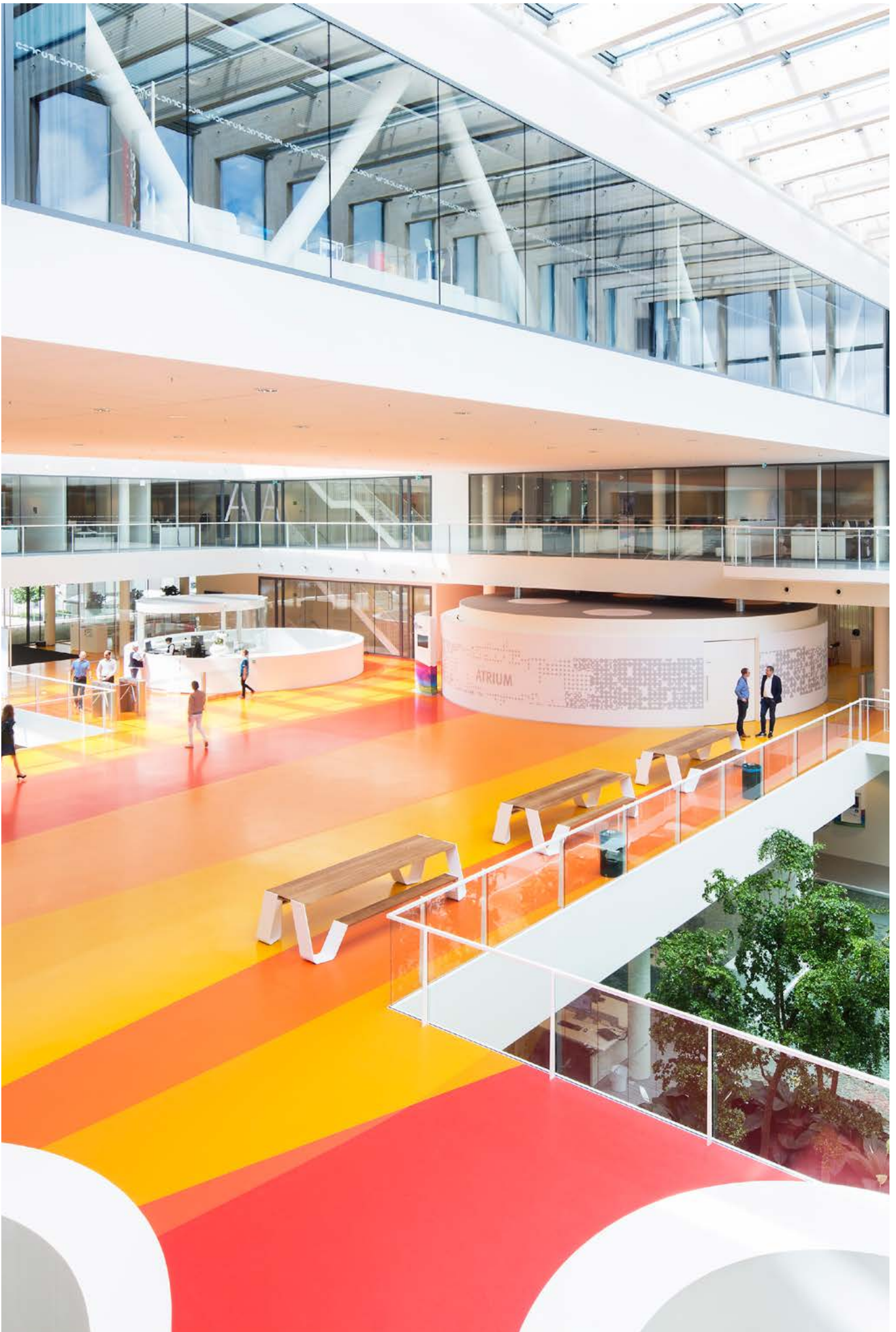


Hangar K is a co-working and co-creation hub. The old railway warehouse was converted into an office space of 2,100 m² with an industrial look. At the entrance you are welcomed by **Hopper** and **Anker** picnic tables. A meeting with clients, a quick coffee break with a colleague: everything is possible at these multifunctional tables.





The community of **Heerhugowaard, Netherlands**, requested an interior where durability and sustainability was of utmost importance. "Durability is an integral part of our way of thinking and acting. It should not be a separate element to tack onto everything else, but a component that comes naturally." Our **Romeo & Juliet** benches bring in nature by design with high-quality FSC-certified wood, fitting the bill and putting the philosophy of the community into practice throughout the interior.





DSM Ahead in **the Netherlands** is a global, purpose-led, science-based company active in Nutrition, Health, and Sustainable Living. DSM uses its bright science to offer positive answers and solutions to the greatest challenges facing our world. Creating a fairer, more prosperous, and more sustainable society starts in the office itself. With the help of architect Tessa Barendrecht from Broekbakema and decorators from aarts & co, **Hopper picnic** tables now bring colleagues together on a brightly colored floor.



Nulens offices use Extremis **Sticks** to separate several inspiring office areas without losing the feeling of open space and natural daylight. The subtle space dividers create privacy while still keeping an open flow. As Sticks can easily be rearranged, the offices can always be given a different look.





The offices of Majestik are located in a bright and open building. **Sticks** create intimacy for the employees whose desks are placed in a single row. The designer office divider separates the desks from passers-by while still keeping an open flow. At the entrance, a **Bistroo** two-seater awaits clients in style.



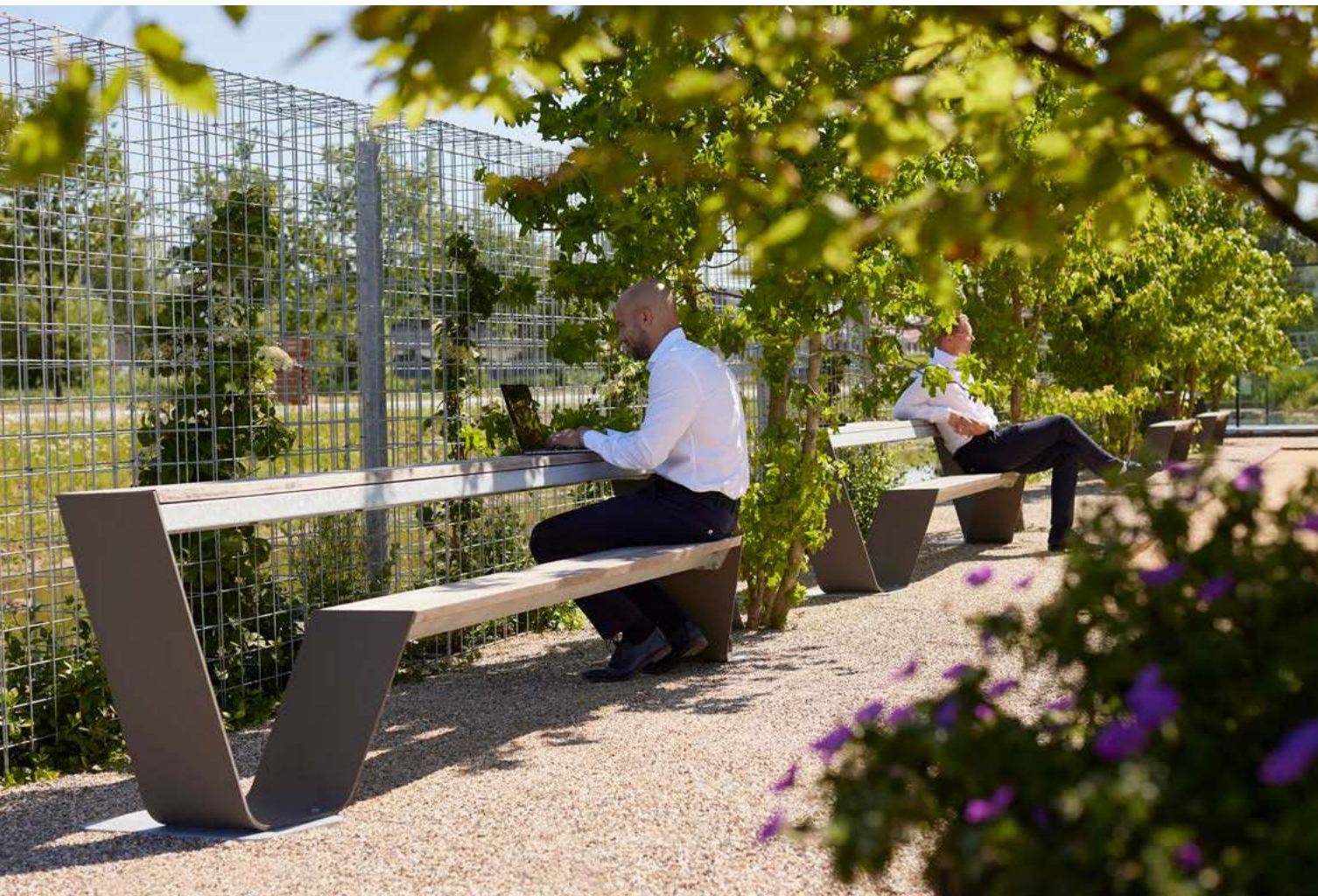
AFAS

Experience Center

Located on the "Avenue of the future" in **the Netherlands**, the AFAS campus is well prepared for the future. The software company didn't fancy building another concrete shoebox office, instead it wanted to offer "more than an office", a center for experiences: the AEC - AFAS Experience Center.

With both an indoor and outdoor theater, a hilltop viewpoint, water features, indoor and roof gardens, sports facilities, and a restaurant with fresh food, the company knows how to spoil the staff. The main goal? Making sure that all 600 employees and more than 1.000 apprentices feel at home, with their wellbeing as the most important aspect.

The many outdoor gardens are fully equipped with Extremis furniture to offer places to eat, sit, meet, relax, rest, and to take work outdoors. Bringing together functionality, durability, and esthetics, our pieces are a great asset for this already gorgeous site! Landscape architect Bart Hoes explains to us more about the gardens of AFAS and his choice for Extremis.



Hopper Bench

"There are so many benches to choose from, but I love how these have a double function. You can use them as a real bench or turn around and make use of the table. They have an awesome dynamic and appeal which makes them so much more than a bench."

— *Bart Hoes, landscape architect of AFAS.*









Hopper

"The architectural design of the building asks for iconic furniture. For me, the Hopper picnic tables were the perfect choice. The colors of the dark wood and steel contrast beautifully with, but also support, the grey building. The Hopper picnic tables are the finishing touch to this scene."

— *Bart Hoes, landscape architect of AFAS.*



Creating an outdoor experience at work



Bart Hoes

Landscape architect of AFAS

What did AFAS require for the gardens?

As they named the campus AFAS Experience Center, they also wanted to extend the experience philosophy into the gardens. The gardens are very visible from the inside and are a real eye-pleaser, but when you head outside you can experience them to the fullest and interact with them. But otherwise, AFAS gave me a lot of liberty, which is very nice to work with at such a scale.

The campus focuses on 4 pillars: meet, work, relax, and connect.

How did you integrate these values?

Steef van der Veldt, the architect for the building, already incorporated these values into the building itself and its interiors, and I extended them outdoors. Cooperating with him allowed us to blur the lines between the indoors and outdoors.

In the gardens, I wanted to create different atmospheres so that each garden has its own identity. You can, for example, sit quietly among the grasses and seasonal plants in one garden or choose to sit on the square which gives a different vibe. There's also a sort of outdoor amphitheater in the hill and a bit further on, the sporting island where you are surrounded by water.



Where does Extremis come into the picture?

I always aim to strike a balance between functionality, quality, and esthetics. Since I was already familiar with the brand, I knew that Extremis would be a good fit in this balance. Each piece has a youthful, tough, and playful appearance which matches the company spirit of AFAS very closely. Extremis creations are also very durable, some designs have been around for quite a while, but they stay beautiful, functional, and witty. On top of that, the furniture invites you to take a seat, which is what we wanted!

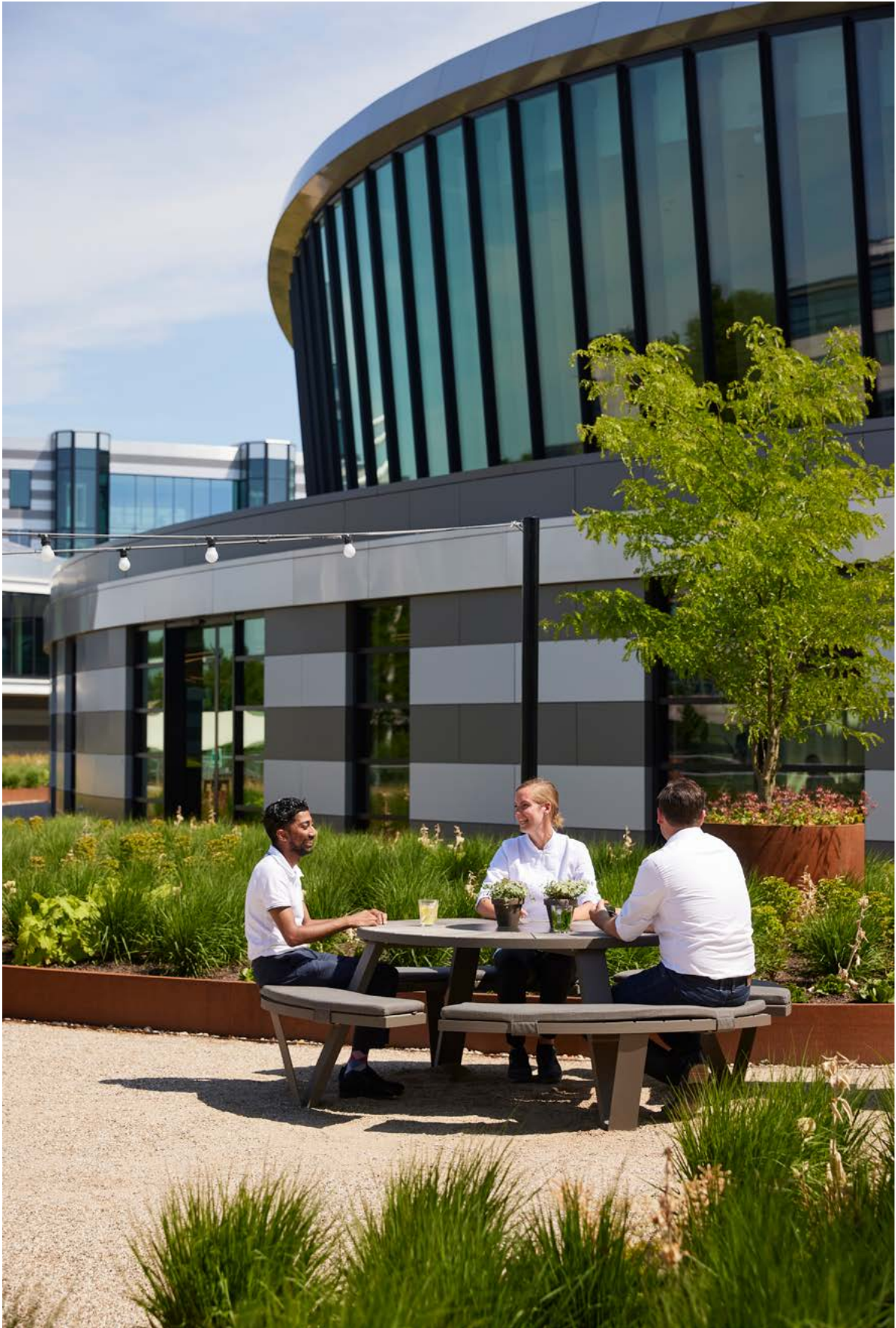
What is the overall reaction now that everything is finished?

People are all pleasantly surprised, and that's the beauty of such a project, to hear how others feel about it, that's when I feel most proud.

I especially like how we have created something that will bring joy in the long term. I design, create and combine materials and Extremis makes the products. Once you put that together you create something extra that is worth seeing.









Alheembouw

State-of-the-art office building

Alheembouw has established itself as a sustainable construction partner and project developer in the private, industrial, and public sectors.

Their state-of-the-art office building is the result of a co-creation with B2Ai architects and has a human-centered approach to various aspects. The cylindrical structure is made out of glass, aluminum, and concrete offering a transparent feeling to the whole construction, in and outdoors.

To improve wellbeing at the office, several outdoor patios increase the connection between the different departments and their team members. They also offer a view over natural elements and provide daylight. Several Hopper picnic tables on the top-level patios give a place to meet up and enjoy the view of the surrounding rural area. At the ground floor terrace, Pantagrue picnic tables with Inumbra parasols complement the round building and are very inviting to employees and visitors for a lunch break.









*Connecting on several
levels to improve
wellbeing at the office.*









CHAPTER 2

Education

“Design your future” is an adage taught to many students throughout their academic careers. By conveying this philosophy through design on campus, you will inspire students and educators even more. Offer places for collaboration with a playful twist, support intellectual challenges with stimulating materials, and encourage students to connect with each other. Expressing efficiency and sustainability, Extremis graduates summa cum laude, perfectly harmonizing focused spaces and break areas.



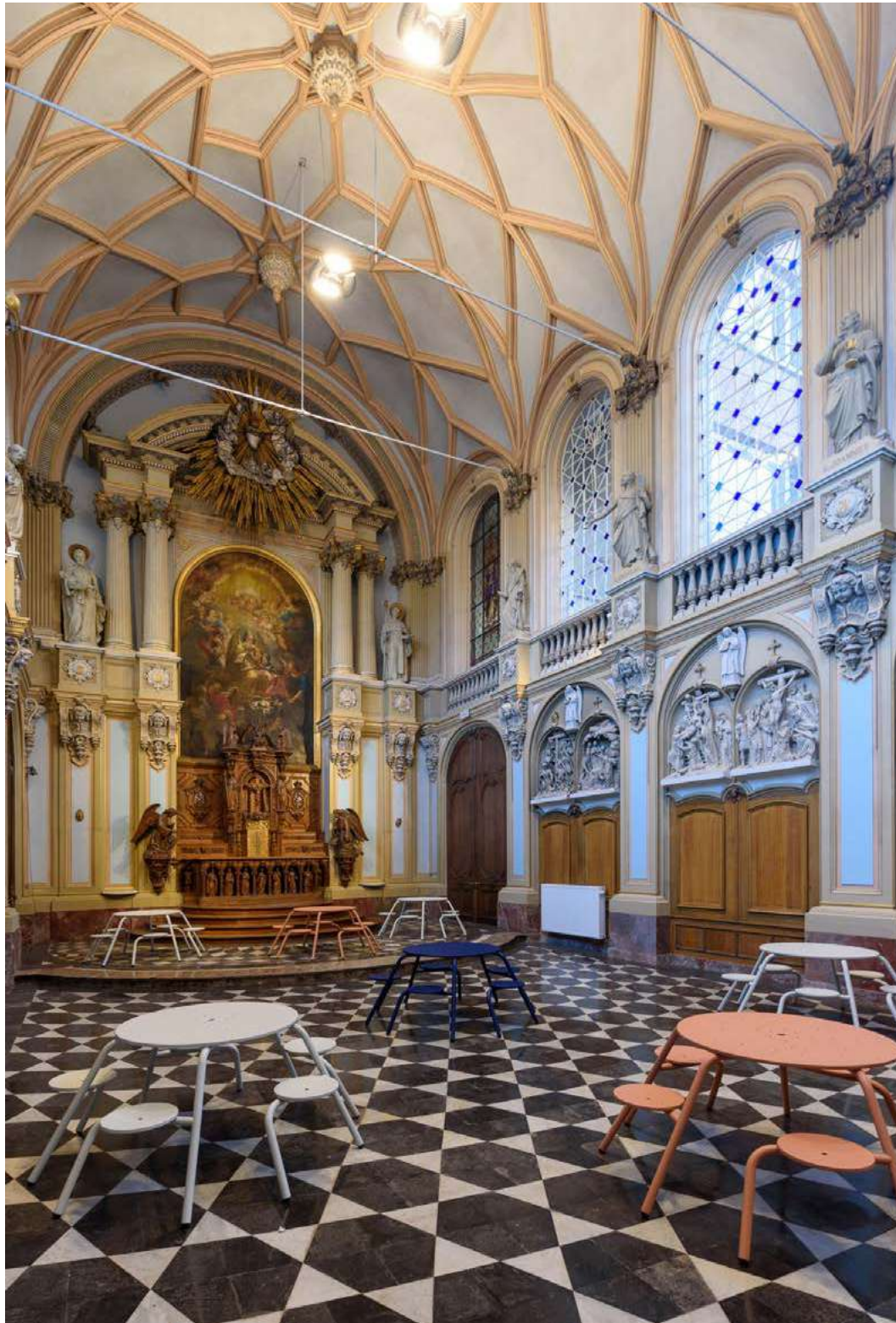




With approximately 10,500 students, Odisee is among the largest educational institutions in **Flanders, Belgium**. For the terrace of their technology campus in Ghent, they chose our low-maintenance galvanized **Pantagruel picnic tables**. And they didn't make this decision lightly. The university college has a roof full of solar panels and a particularly green environment. All Extremis furniture is carefully made in Belgium with respect for the environmentally efficient use of materials, so in that way it was a perfect match.



Students at the **Boston Hult International Business School** get to live at “home away from home” alongside students from all over the world in the Hult House. Designed by Education First, the student residence offers fantastic opportunities to socialize with like-minded students. These bright **Virus** tables make it the perfect place to study and relax.



Speaking of an exceptional classroom... This divine study is a part of the Guldensporencollege in Kortrijk, Belgium, and served as a chapel in earlier times. The architects did a phenomenal job of restoring the chapel to its former glory while also giving a present-day feel to make the school student-proof. The warm colors and playful shapes of the **Virus** tables combine well with the old materials, historic floors, and stained glass windows.

Changing today's way of thinking

“Thinking outside the box” is what many seek in design furniture, but for us, it’s not enough. When you’re designing for the future you have to rethink the box. We look at things differently and our products always have that extra something, solving practical problems or improving existing situations. The result is something familiar yet surprising. Sometimes strange-looking, but always well-functioning, and ahead of its time.

When designing a new product we never let short-lived fashion guide us, nor do we follow the crowd. Sure, we could keep on designing chairs just for the sake of it. But why bring more unnecessary stuff into this world? Strong-willed as we are, we only create thoughtful, inspiring pieces that add new insights and last for lifetimes.

By holding on to this statement, we can truly focus on designing for the future while keeping our users’ worldview firmly in mind. How else could we have the guts and freedom to turn sofas inside out and put parasols upside down?

And it’s not just our own creations that we challenge – we hope to inspire you, to spark new interactions, to see the world in a new light, and to pass it on to the next generation.

Reinventing the parasol

90% of all parasols produced today rest on the principle of the traditional Chinese parasol. It is so familiar that hardly anyone would consider improving the design. But with a bundle of slats,

ribs, and ropes hanging above your head, we knew we had to rethink the design.

So, we flipped it over, while keeping the technical parts out of sight, our Inumbra and Inumbria parasols offer a clean view, more shade, and greater wind resistance.

Innovate or die

Outdoor sofas are made to bring comfort and softness outside. But, being located in Belgium, we know that along with the sunshine, there’s gotta be a little rain sometime. When you crave a sweet moment in the sun, you don’t want to drag cushions outside, keep your fingers crossed for dry seating, or take off an ugly cover.

Instead of making a soft sofa that gets hidden under a durable cover for 90% of the time, we turned the outdoor sofa inside out. The entire Walrus sofa is made from an extremely durable material that doesn’t absorb water, while inside a hidden pouch we added soft, tactile cushions that are always dry and ready to use.









The courtyard at **Cambridge Assessment** has quite a few **Pantagruel** picnic tables. The round tables are a place where colleagues connect, lunch, unwind and enjoy the open air. The tables blend neatly into the space and will last a lifetime thanks to the durable wood and galvanized steel legs.



The Yale Science Building in New Haven, Connecticut, establishes an active, unifying hub for academic life on Yale University's Science Hill campus. The plaza — known as "The Pavilion" — is the defining centerpiece of Science Hill. Among a variety of **Hopper picnic tables**, **custom-made Hoppers offer wheelchair accessibility** promoting socializing, a sense of collaboration, and collegiality. Students, faculty, and staff have a comfortable, inspiring setting with convenient dining options and outdoor study spaces with natural light and views of the redesigned landscape.





VIVES University College covers six campuses and provides a whole range of professionally-oriented study programs. With approximately 13,000 students, VIVES is the biggest university college in Flanders. So far, Extremis Virus picnic tables have spread to two campuses: Kortrijk and Bruges.



VIVES' mantra is "Design your future". The graduate school offers contemporary competency-based higher education, innovative practice-oriented research, and social services. Their operation is human-centered and driven by taking responsibility for and ownership of sustainability. During a long, intellectually challenging day the students can take a break at Virus tables.



The building complex of **Frankfurt International School (FIS)** in Germany needed some robust, high quality semi-public furniture, but Extremis offered them much more: **Hopper with backrests** and **Gargantua** with **Inumbra** parasol are real people-magnets and tools for togetherness. These picnic tables also add a playful twist to the architecture and the aesthetics of the building.



This university library in **Bruges, Belgium**, is not the average library where books gather dust – it's a contemporary building constructed from concrete materials. In **Kosmos** students find a serene, private corner to discuss their favorite book or just to chat about their favorite librarian.





University of Leiden

An echo between “Silence please” and “Science please”

The beautiful Science Campus of the University of Leiden in **the Netherlands** has multiple Hopper picnic tables on different levels. It’s a modern, open, and communicative building in which the various research institutes are interconnected.

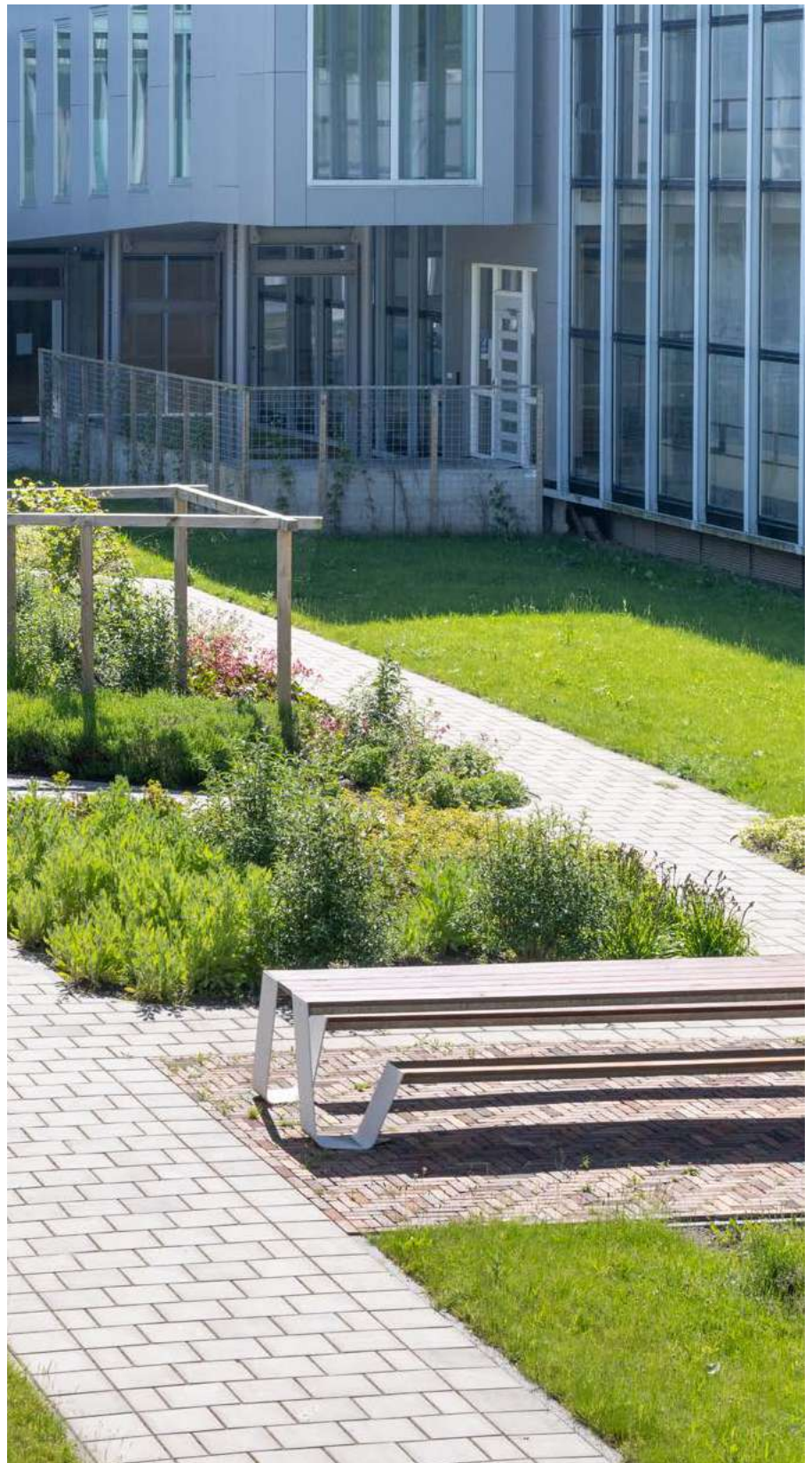
The design of the campus functions as an inspiring and expressive environment where different users come together. The long Hopper picnic tables serve this purpose by letting everyone slip in easily at the sides to collaborate on their projects.

Did you know that this Leiden laboratory building has a BREEAM-NL Very Good certificate? This international certificate means that the building meets very high sustainability requirements. So, it’s no surprise that the architects chose the functional and durable wooden Hopper picnic tables to fill the shared spaces.











The Hopper picnic tables on different levels offer the students a great spot to have lunch, study or work on projects together.





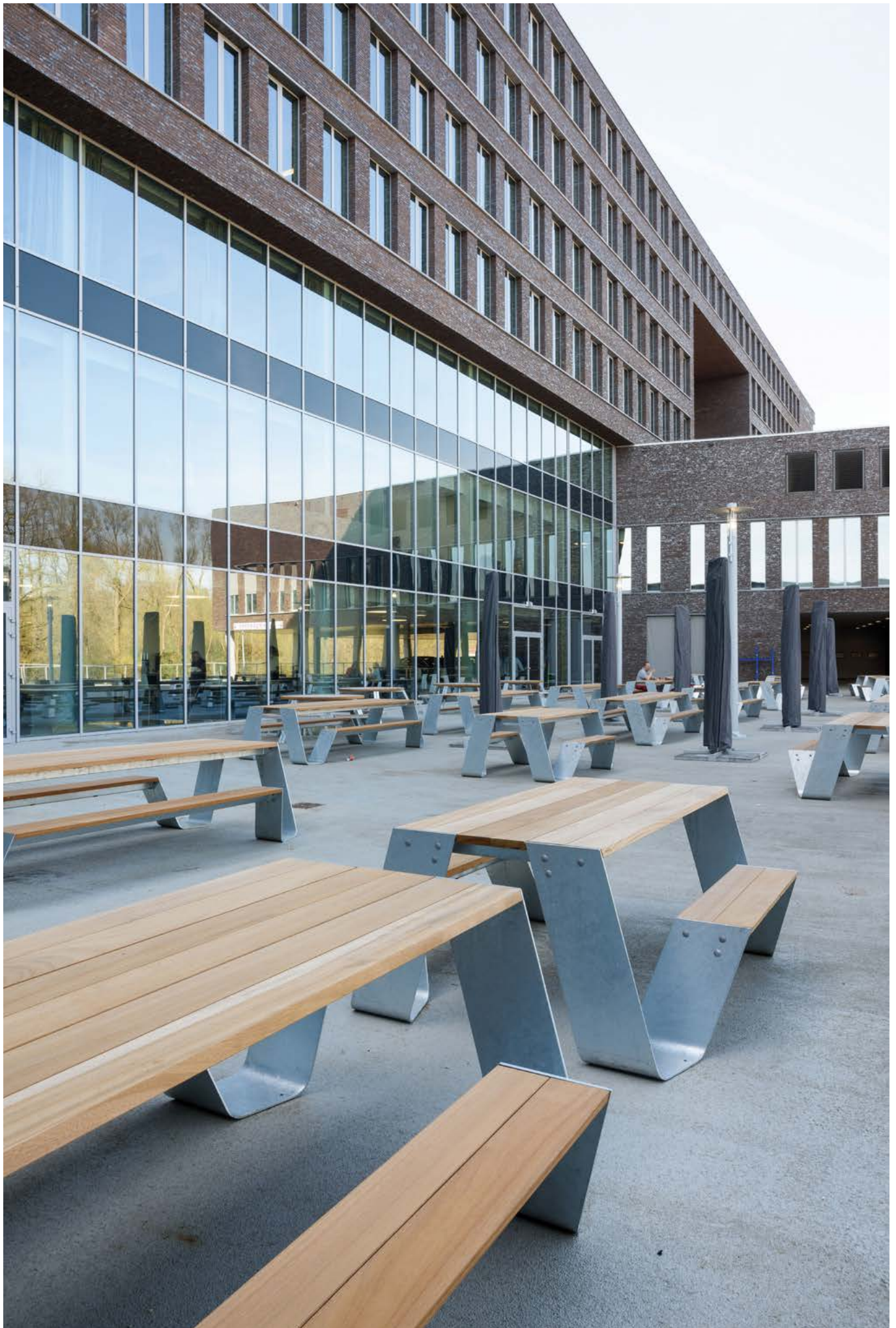


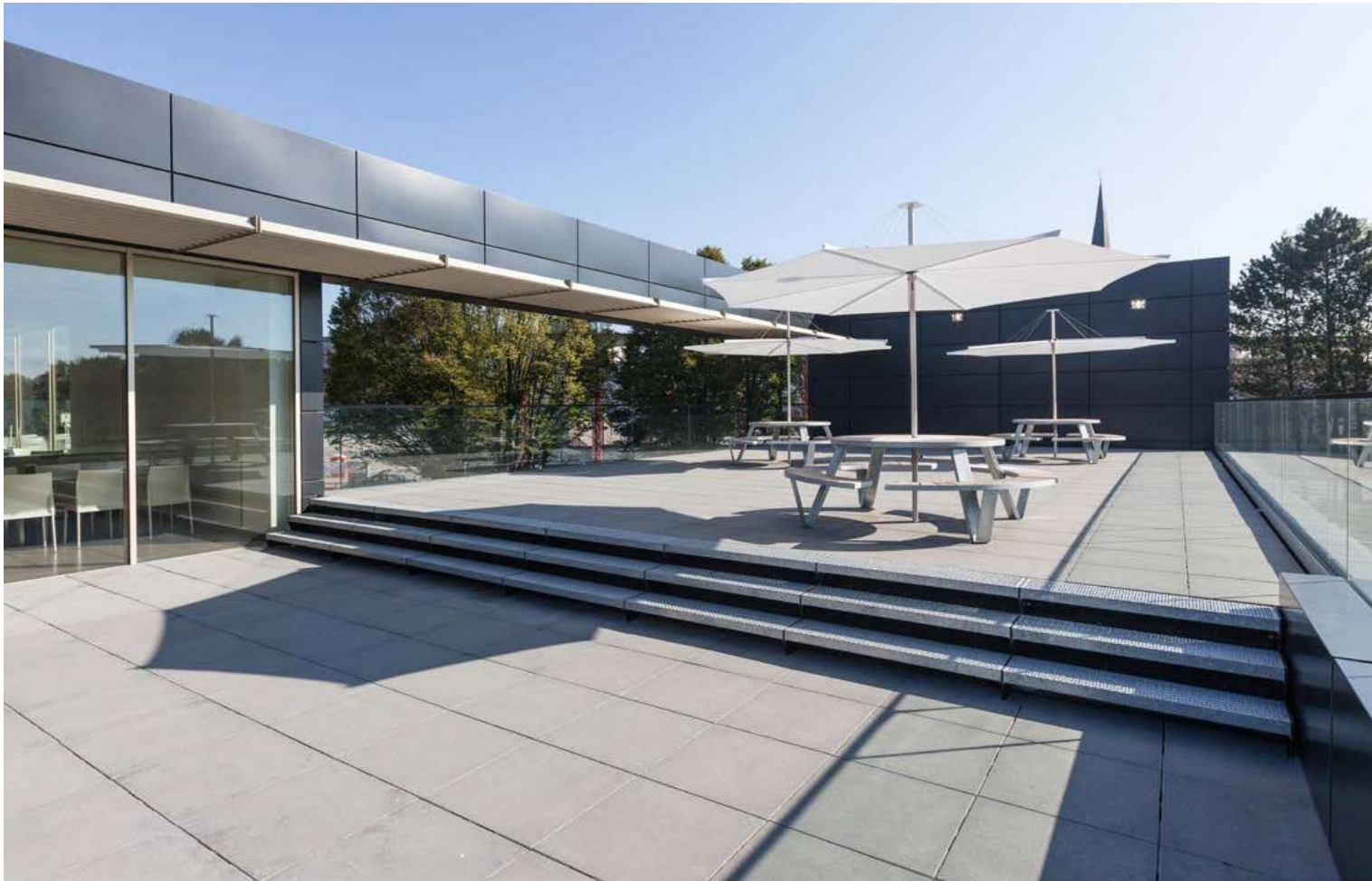
CHAPTER 3

Healthcare

By looking at how people naturally interact, we always design our furniture with the user in mind. The high-quality design balances different well-considered features so that, in the end, they always bring people together. The wooden materials add warmth, different furniture shapes enhance social contact and the elegant design works for everybody to create true tools for togetherness. Catering for both peace and stimulation, indoors or in the open air, you create the perfect space to repose, heal and create.







The outdoor terrace of the Maria Middelaes hospital in Ghent is bedecked with **Hopper picnic** tables that offer a fruitful outdoor moment to both patients and caregivers. Sparking conversations in the fresh air, this patio positively contributes to restoring health.



The AZ Jan Palfijn hospital in Ghent was completely renovated a few years ago. The kitchen and staff restaurant were also given a facelift. An outdoor dining area was a must. The terrace is decorated with various **Hopper picnic** tables with matching canopies and round **Pantagruels** with **Inumbrina** shades. The galvanized legs of the tables blend in perfectly with the aluminum cladding and windows, while the wood adds warmth and amenity to the outdoor space.

Healing people through design

People love nature. For thousands of years people relied on nature for their survival – it could mean the difference between life and death. And today, nature is still part and parcel of people's lives. It's an inborn need we all share. This natural instinct is called biophilia.

It's with good reason that people intuitively search for nature: it has countless scientifically proven benefits for people, especially on their health. Being connected to nature reduces the impact of ADHD, anxiety, anger, and fatigue while also enhancing creativity, giving clarity in thoughts, strengthening memory, and building up the attention span. Physiologically, scientists see reduced blood pressure, a lower incidence of stress hormones like cholesterol, faster healing, and the prevention of sickness.

But how do we reconnect people with nature in the built world? Hoping that some plants or animals wander in by themselves is not the answer, the answer is biophilic design.

Nature is a friend

By intertwining nature into our architecture, furniture, and spaces, you replicate nature's benefits indoors, create inspiring and refreshing places where people feel truly at ease, and counteract negative effects such as stress and health complaints.

Buildings shouldn't be concrete shoeboxes with fluorescent lighting, sterile white walls, and few windows. By integrating more natural materials, patterns, nature-resembling colors, indoor plants, natural forms, sounds, and smells,

and views on greenery, you boost the circadian system, make people feel part of a greater whole, and replicate outdoor benefits indoors.

A garden view to recovery

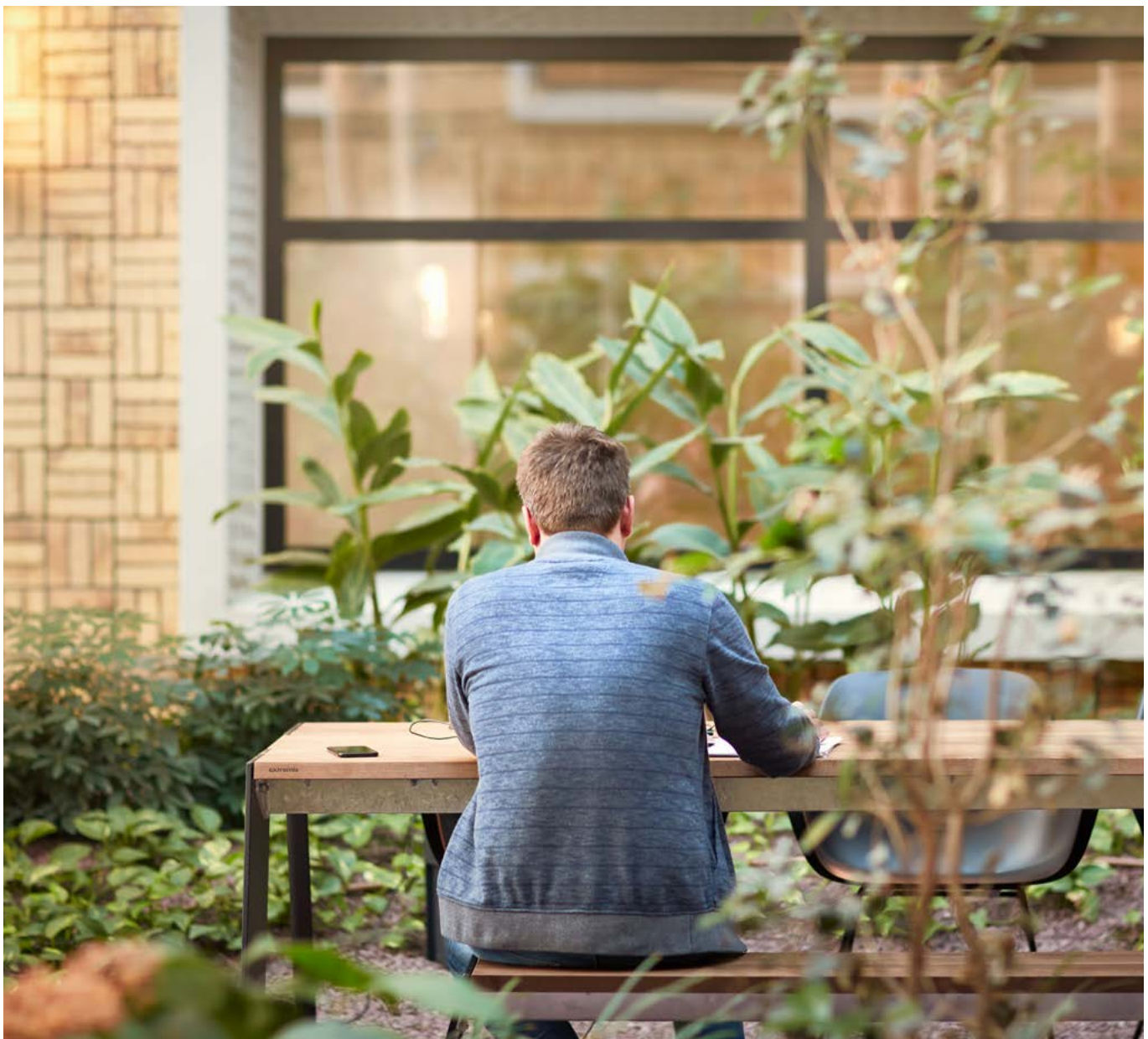
In healthcare alone, a decent biophilic design decreases recovery times by 8.5% and reduces pain medication by 22%. What if all classic white-corridor hospitals started integrating different facets of nature and had the objective to be "a hospital in a garden and a garden in a hospital"?

Patients would forget parts of the pain and recover much faster in the park-like ambiance. Each room would have a window view with scented plants and sunshades. With a rooftop with fruit trees and a vegetable and herb garden, the forest-like hospital would attract butterflies and birds while catering fresh ingredients for patient's meals.

And not only patients but also caregivers and the public could benefit from such a building. Shared terraces and parks would enrich the neighborhood. Hospitals would no longer be a place for ill people, but a place to meet nature, to recuperate, interact and find rest.

Often, biophilic design is regarded as a luxury for those trying to showcase their green credentials.

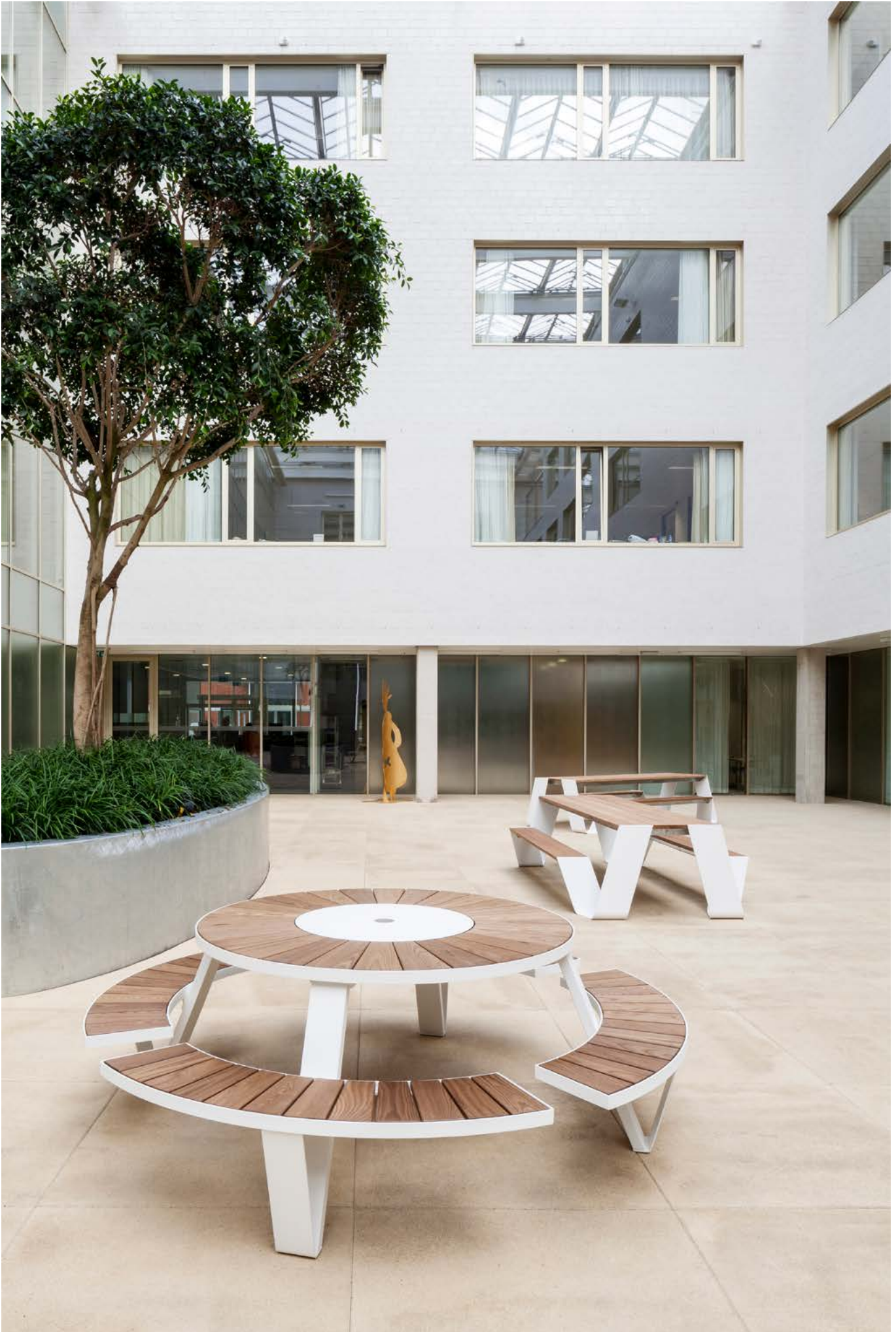
In reality, it's an investment in health, productivity, and happiness.







The therapy tower of the university hospital in Leuven, Belgium is an innovative rehabilitation center for patients who need long-term rehabilitation. The center is geared to the specific physical and mental needs of people in recovery and is set in an environment that simultaneously offers both peace and stimulation, away from the busy rhythm of the university campus. The top floor of the 10-level tower is the gym used for team sports and other rehabilitation activities in large groups. In between sport sessions, rehabilitants find a place to rest on the **Extempore benches**.





The **UZ Leuven** hospital in **Belgium** aspires to offer the best care to patients, contribute to scientific research and educate first rate caregivers. To create the best hospital environment, they created a winter garden with **Extremis** furniture. Here, patients, family and carers can enjoy some well-deserved peace and quiet. The winter garden not only brings rest, it brings people together and expedites healing.



A new social area was created in the grounds of the **St. Pölten Clinic** in **Austria** using a generous wooden deck and weatherproof **Gargantua**, **Abachus**, **Inumbra** and **Inumbria** items. The adjoining surfaces were upgraded with extensive planting, decorative sunken walkways, and oversized plant pots.



AZ Zeno

A futuristic hospital building

As you pass through Knokke-Heist, a seaside town in Belgium, a futuristic building grabs your attention. The eye-catcher is the hospital, and it has won a prestigious award at the World Architecture Festival in Amsterdam. Maybe choosing Extremis furniture had something to do with that?

In 2007, the hospital organized a competition for architects to come up with a design for a new hospital. Three Belgian architecture firms (AAPROG - BOECKX. - B2Ai architects) teamed up and won this competition. Eleven years later, the building was opened and reviews are stunning. We were very curious about the why, how, and what of this building, so we sat down with Pieterjan Vermoortel, CEO from B2Ai architects and asked him everything about it.





Thoughtful choices from A to Z

Pieterjan Vermoortel

CEO from B2Ai architects

“The building is inspired by the surrealistic work of René Magritte. It looks like it’s floating above the landscape with light and nature dominating the entire building, top-down and bottom-up,” according to Vermoortel. “The seamless transitions between outside and inside, private and public spaces results in an inviting and inspiring building”.

What about the choice of materials?

The main goal was to get a very bright building with colorful accents here and there. That’s why we chose white as the background color. White is a contemporary color and serves as the perfect basis for the rest of the interior design. We chose for light basic colors and some wooden accents.

Why did you choose Extremis furniture?

We chose Extremis because their vision suits this project very well: furniture with a strong personality, well-considered features, and high quality design,” shares Vermoortel. “Because of the fast-changing weather conditions and powerful wind, sustainable materials are very important when designing a project near the coast. Extremis is an established Belgian brand and has a widely-known service record. That’s why the choice for Extremis furniture was an easy one.

The Hopper picnic tables were placed on the restaurant terrace because they offer great accessibility. There is plenty of room at the head of the table for a wheelchair. Vermoortel adds: “Co-workers love to lunch, relax and even hold meetings at the Hopper.”

On the psychiatric department terrace, we opted for the ultimate piece of togetherness (in our eyes). We were looking into solutions that enhance eye contact between everyone at the table. The round Pantagruel was the perfect solution for this.

Do you see AZ Zeno as an example of biophilic design?

Well, having access to natural light and being in contact with a green environment has a major impact on the healing process for a patient. Actually, it is beneficial for everyone. It can reduce stress, boost your productivity and contribute to overall wellbeing. Stacking the interior with plants and greens may not be the ideal solution, says Vermoortel with a chuckle.

Because of the sophisticated architecture, you can enjoy nature from inside the building. Therefore, we preferred to have a hospital in a green environment rather than a building in the city without greenery or daylight. Vermoortel concludes: “We designed this building with the users and their relationship with the environment in mind”.

“I truly believe that AZ Zeno is the ultimate example of biophilic design.”



*Co-workers love to lunch,
relax and even hold
meetings at the Hopper.*











A photograph of an outdoor patio area. In the foreground, there are large, white, square umbrellas supported by metal poles. The patio floor is made of light-colored stone tiles. In the background, there is a green field with some trees and a person walking. The sky is clear and blue.

CHAPTER 4

Hospitality

Why do we put in all the effort? It's all for people. Because without people, food remains untasted and a chair loses purpose. Designed to gather people around, our furniture offers more than seating options. Create and accommodate moments that truly matter, in any season, indoors and outdoors, using sustainable materials and always stylish. For intimate occasions or extra-large parties, side by side or eye to eye, to start a conversation or just to sit in silence.





In the bustling business district of **Paris, La Défense**, you will find the trailblazing Dutch hotel group citizenM. This innovative brand describes its hotels as offering affordable luxury, smart technology and clever design. The upbeat, funky, yet relaxing atmosphere forms the essential vibe of the place. Floor-to-ceiling windows lead out onto the large sun deck, where patrons can enjoy a drink at the **Marina combo** or **Pantagruel picnic table** with a view of the impressive Grande Arche. Soaking up some sun on this terrace is the perfect antidote to a full day of business meetings.



Located on top of **the Heron Tower in London**, the Sushisamba restaurant features the highest outdoor dining terrace in Europe. With 360° views of the city's financial district and its famous Gherkin tower, delicious food, and colorful furniture, you're in for a wonderful experience! The **Hopper benches** offer the best view of London and with the custom colored cushions, they truly fit the scene.





PARK

fizolo



This lovely coffee bar can be found in Graphisoft Park, just outside the city center of **Budapest, Hungary**. It's a hotspot for those who work in the nearby offices, and - let's be honest - we can only envy them. They can sip delicious hot and cold beverages on this 120 square meter glass-walled terrace. Even healthy bites like salads and sandwiches (avocado is the biggest favorite) are served here at the **Marina combo** or **Anker tables**. Is it break time yet?

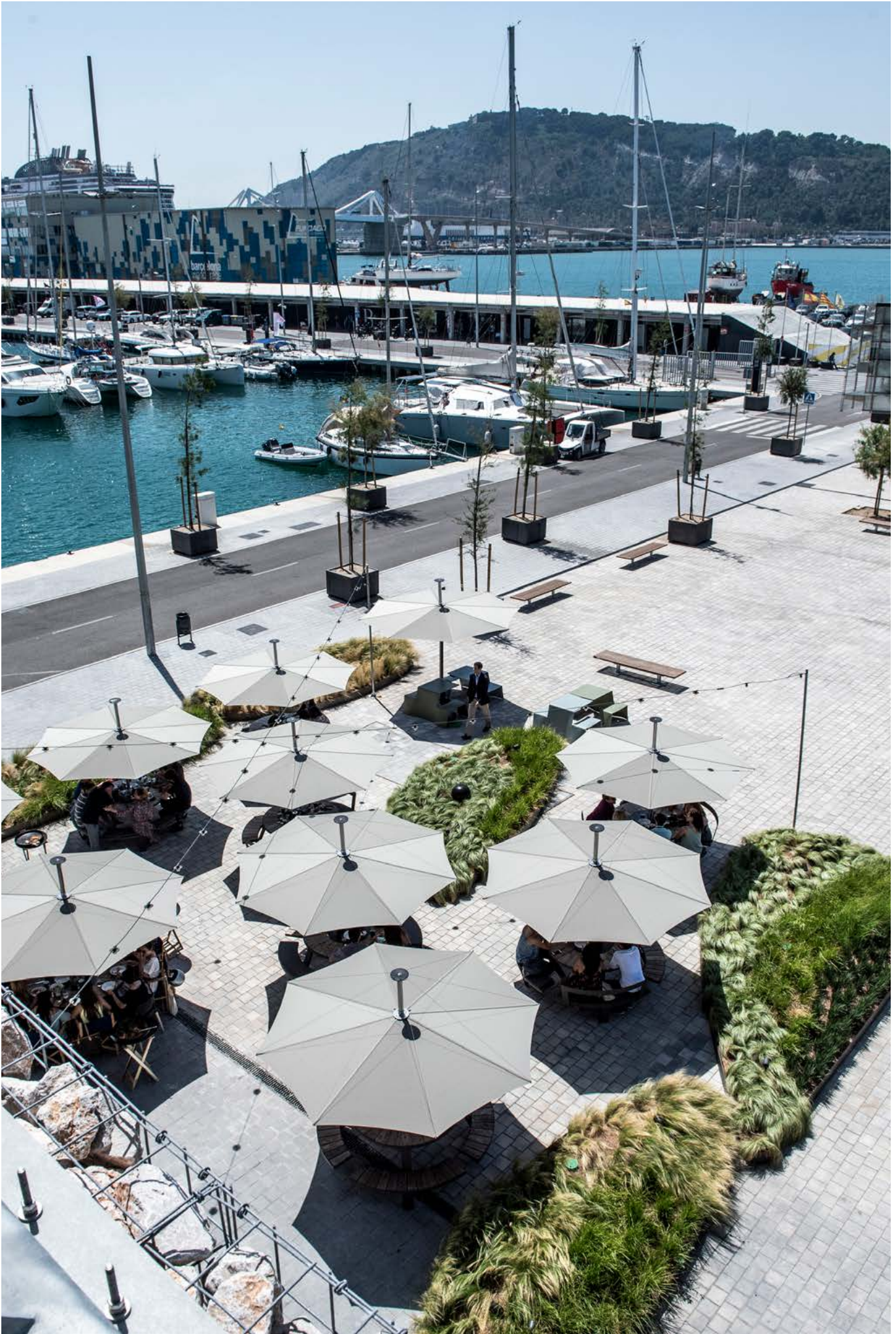


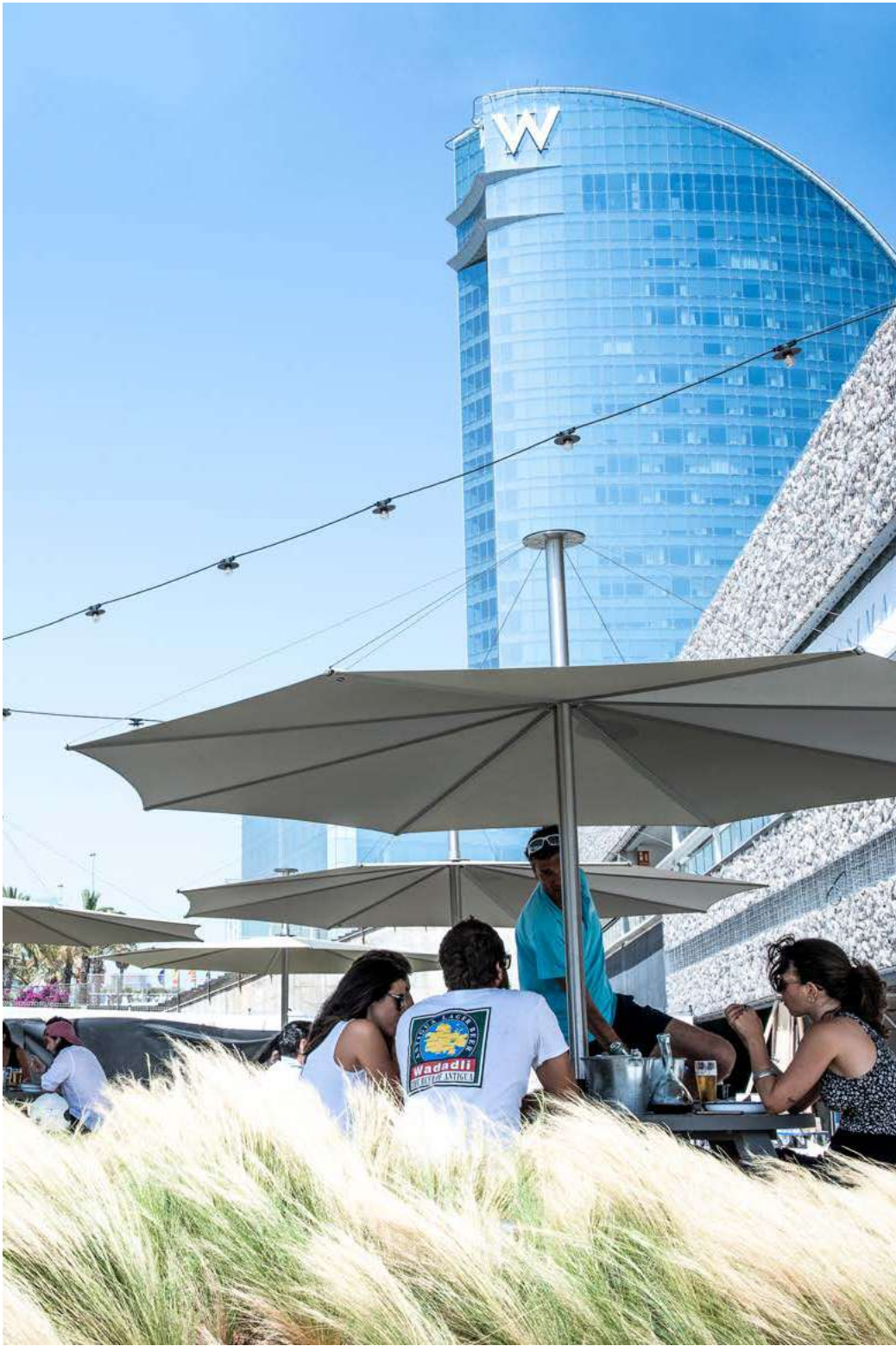
The extensive terraces of the French restaurant **Au Comptoir Vénitien** are the perfect setting to enjoy a carefully-made meal. Although located in the bustling capital of the **French region of Brittany**, the terraces form a mellow contemporary paradise for food lovers. Sitting at the **Pantagruel picnic** under the **Inumbra** shade, you get to enjoy that 'farniente' feeling.





What more could we wish for than to see our furniture at home on this phenomenal terrace in the **Italian mountains**? Rifugio Ratti Cassin is right beside the ski slopes and welcomes guests all year round. The **Gargantua** tables with **Inumbra** shade stay out on the terrace all year round. Thanks to super durable wood and steel, these tables feel at home in any season. The openings at the sides of each bench make it easy to get in or out, even in the heaviest ski boots.





With views of the port of **Barcelona**, and with gorgeous tables to sit at, this restaurant truly has the best terrace in town! Seated around the **Pantagruel** picnic table and sheltered under the **Inumbra** shade, you'll enjoy your meal in comfort. These picnic tables bring people together, and thanks to their round shape, conversations flow naturally!

INTERMEZZO

Inspiring interactions that matter

At Extremis we don't make furniture, we make "tools for togetherness". And no, that's not just a quirky motto, it is what drives all of our designs. Each of our pieces is at once useful, necessary, and beautiful, but also sparks and enhances meaningful connections.



Our furniture performs in silence and humility: it brings people closer and lets them relax, while disappearing into the background like a tool.



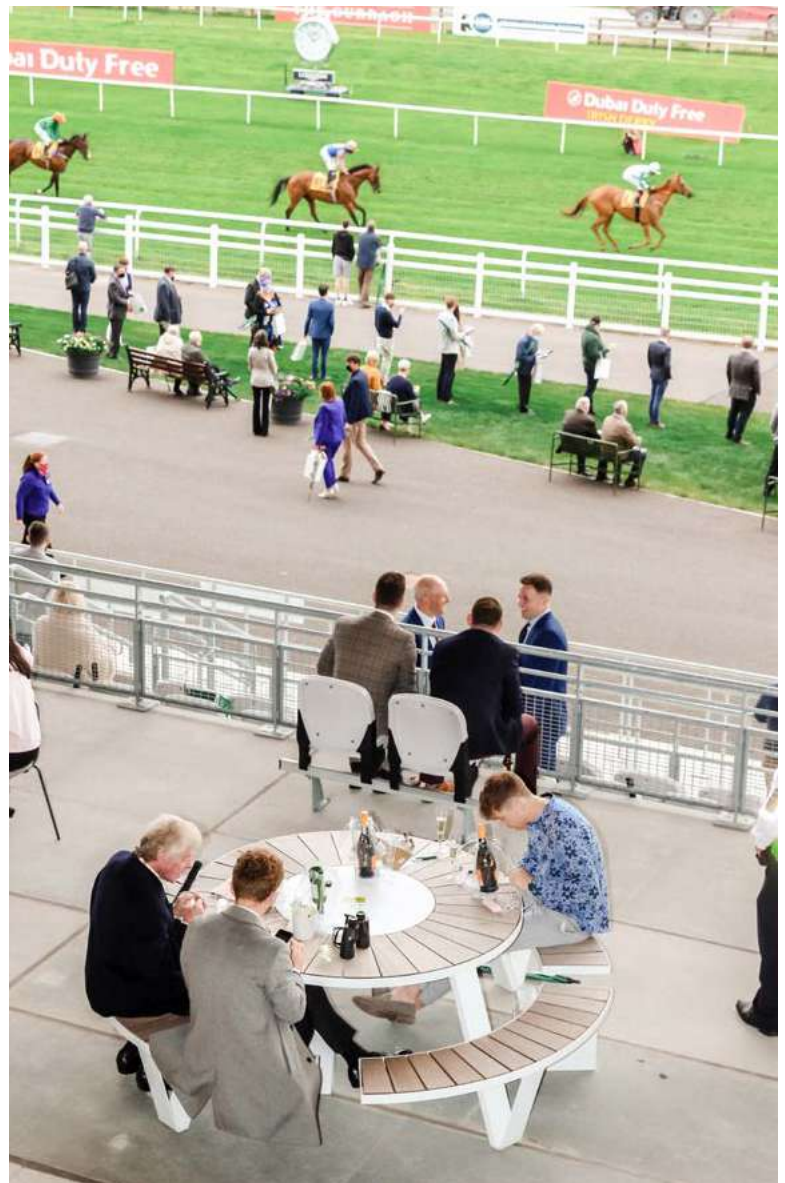
By looking at how people interact with each other, we draw ideas for new designs that challenge existing forms of interaction. The way people sit side by side on a romantic bistro in Paris served as the inspiration for Bistrou.

Instead of sitting opposite of each other, you sit shoulder-to-shoulder, observing and commenting as the world goes by. This way, the furniture becomes more than a seating option, it is a conversation starter that creates intimacy while also making clever use of space.

But of course, the piece also improves existing situations. Thanks to its three cleverly positioned legs, the Bistrou remains perfectly stable on any outdoor terrace. The fact that this ingenious concept is quick to stack and lock away is another great benefit for the catering industry.



Hooves drumming, your heart galloping faster than the thundering horses racing up the track... The Irish passion for horse racing is legendary and experiencing it at **The Curragh** is unforgettable. The outlook from The Curragh benefits from a spectacular backdrop with expansive views across the gentle rolling grassland while various Extremis **Pantagruel** picnic tables support fans throughout their cheers.





Located on the border of France and Belgium, De Barbier takes the best from each world. Combining Belgian and French culinary traditions and merging design furniture with traditional architecture, this terrace really stands out. While the colors of the **Virus tables** blend and pop at the same time, you get to enjoy a moment just for you.





After an energizing walk on the beach, it's time to grab a drink and watch the surfers ride the waves. The Twins Club beach bar serves refreshing cocktails on **Marina picnic** or **Gargantua** tables. Each table invites clients to come together and watch the seagulls bobbing up and down on the white-capped waves.



The luxury 5 star Mandarin Oriental Hotel offers a taste of Asian serenity in sun-kissed **Miami, United States**. The MO Bar and Lounge showcase the panoramic skyline and water views, complemented by elegant seating. **Sticks** offer privacy from passers-by while also adding an extra organic layer to the interior.





This is the lovely riverside terrace area of the Va et Vient restaurant. Take a seat at the **Hopper picnic table with shade** and enjoy delicious and creative dishes featuring seasonal products from local producers, sometimes with a foreign twist.



Den Olifant is a cozy bar & diner in the heart of Ypres. It's located in a former Mayor's house, so it breathes a certain grandeur. They have kept many authentic elements like the hardwood floors and rosettes on the ceiling. The **Tiki bar stools**, with their pure and minimalist contours, complement this bar perfectly. The oak seat matches the hardwood flooring and the frame in white powder coated steel blends in seamlessly with the glossy white tiles.



After a guided tour in the vineyard of Oud Conynsbergh, Belgium, it's finally time to taste the homegrown wine. Visitors can take a place at colorful **Virus tables** that playfully match this idyllic location. Inside, the comfortable **Tiki bar stools** elegantly surround the wine barrel tables.



Ideally located by the port of **Monaco** facing the sea, La Brasserie de Monaco invites you to taste Monaco Beer, brewed on site. The industrial-chic terrace has been designed around brewing vats, **Hopper picnic tables with shade** and a combination of bare wood and steel. It's the meeting place for all those who want to have fun, nibble, meet, in a trendy, cool, and festive atmosphere.

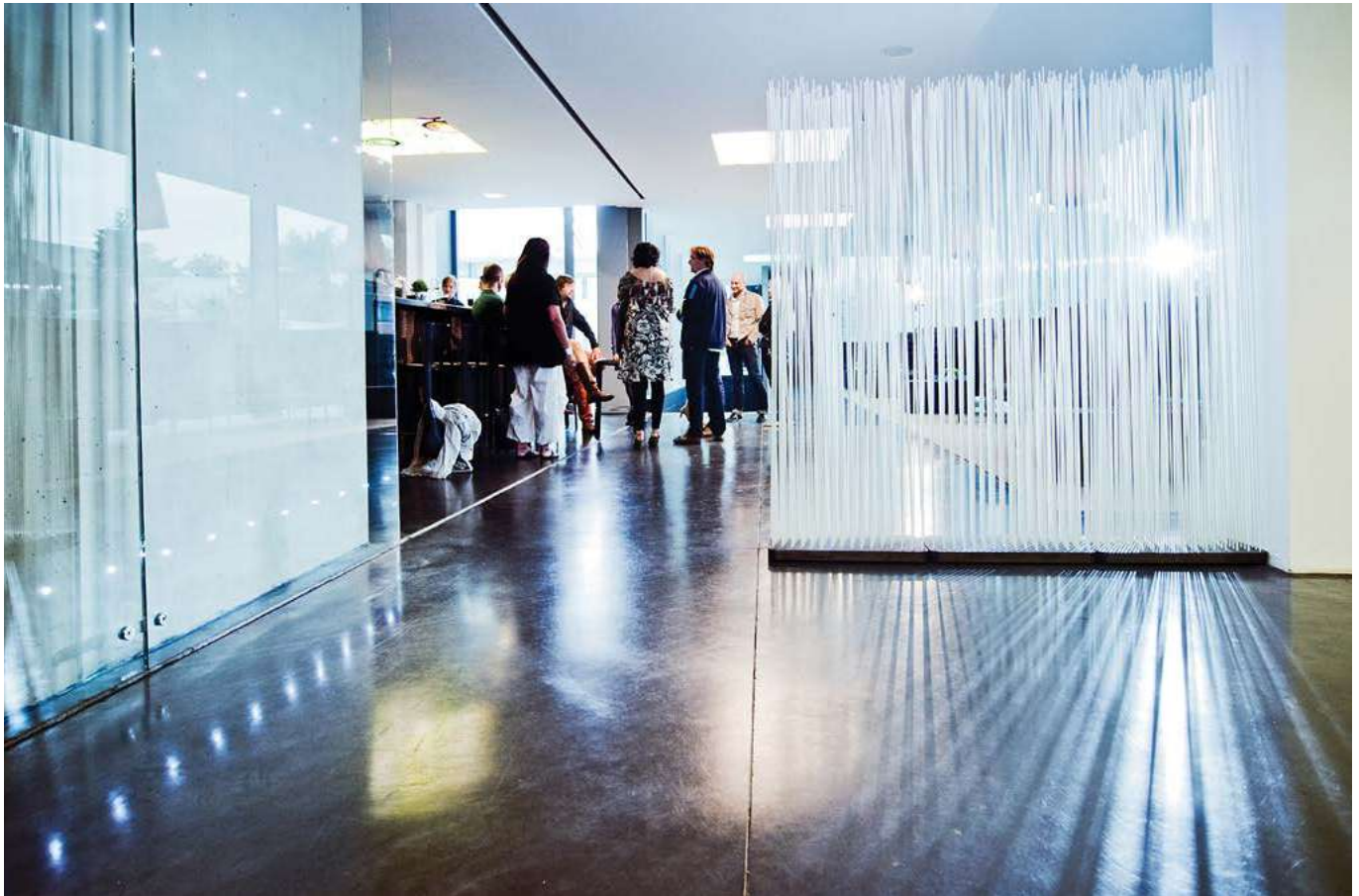


A spa, peaceful gardens, and stylish rooms are on offer at Hotel Sansi Pedralbes in **Barcelona, Spain**. This designer hotel doesn't limit attractive features to the rooms but has also included some Extremis **Picniks** in its garden area.





Everybody knows **New York** is famous for its yellow cabs. However, when you turn around the corner at the Standard Hotel, it's not the yellow cabs that stand out, it's the iconic yellow tables. The hotel once parked a multitude of our colorful Picnik tables at their entrance, which immediately encouraged the community to take a seat and get to know one another.



D-hotel is a unique marriage between a historical site and design furniture. In the reception area **Sticks** divide the space while keeping an open flow in the state-of-the-art interior.





20 talented Flemish chefs, 2.000 hungry gourmands, and a 12 meter-long **Marina picnic table**, that's all you need to host Flemish Food Fest in Ghent, Belgium. Combining gastronomic food, being together in a casual atmosphere and some rock 'n roll unmistakably showed to be a killer combination.



St. Bernardus

Bar Bernard

Rooftop bar & terrace of Brewery St. Bernardus

In the middle of the Flanders fields, a beautiful building rises: the visitor's center of St. Bernardus Brewery. On the top floor, you can find Bar Bernard, a spectacular rooftop bar. Designed in sophisticated style, the interior and exterior seating arrangements are more than just seating options - they create intimacy, make clever use of space, and are conversation starters in their own right.

Belgium is known for its (special) beers. Did you know the first monks started to brew in the 12th century? This age-old tradition of Trappist beers is still alive today in family breweries all over Belgium. One of them is St. Bernardus in Watou. In the middle of the Flemish landscape they have a visitor's center, with a restaurant and bar on the top floor.

The St. Bernardus beers are the starting point for most of the dishes at Bar Bernard. They offer food pairing, where the flavors of the dishes are highlighted by the combination with one of their beers. Tasting beers brings people together. That's why they also opted for food sharing, where you can order large portions to share with your friends & family. No wonder that Bar Bernard chose the 'tools for togetherness' from Extremis to furnish their interior and terrace.









*The rooftop terrace offers
a 360-degree view of the
hop fields, the Westhoek,
and France.*







Bistroo

Bistroos are installed right behind the panoramic windows where people can sit side-by-side while they enjoy the views. The colors Copper brown, Reed green, and Light blue were chosen purposely; they are a reflection of the surrounding landscape. The compact Virus picnic tables offer two extra seating places and fill the space playfully. The rooftop terrace offers a 360-degree view of the hop fields, the Westhoek, and France.





360
DIPLOME D'ARTISAN
BERNARD









Marina

The all-white Marinas provide room for a grand gathering. Chairs and benches are combined so that every visitor can find a seat to their liking. The Captain's chair is the most comfortable and ergonomic outdoor chair due to its wide, shell shape and armrests. Because of its unique form, rain flows through the ventilation hole, which keeps the seat (and your buttocks) dry and clean at all times.





CHAPTER 5

(Semi) public

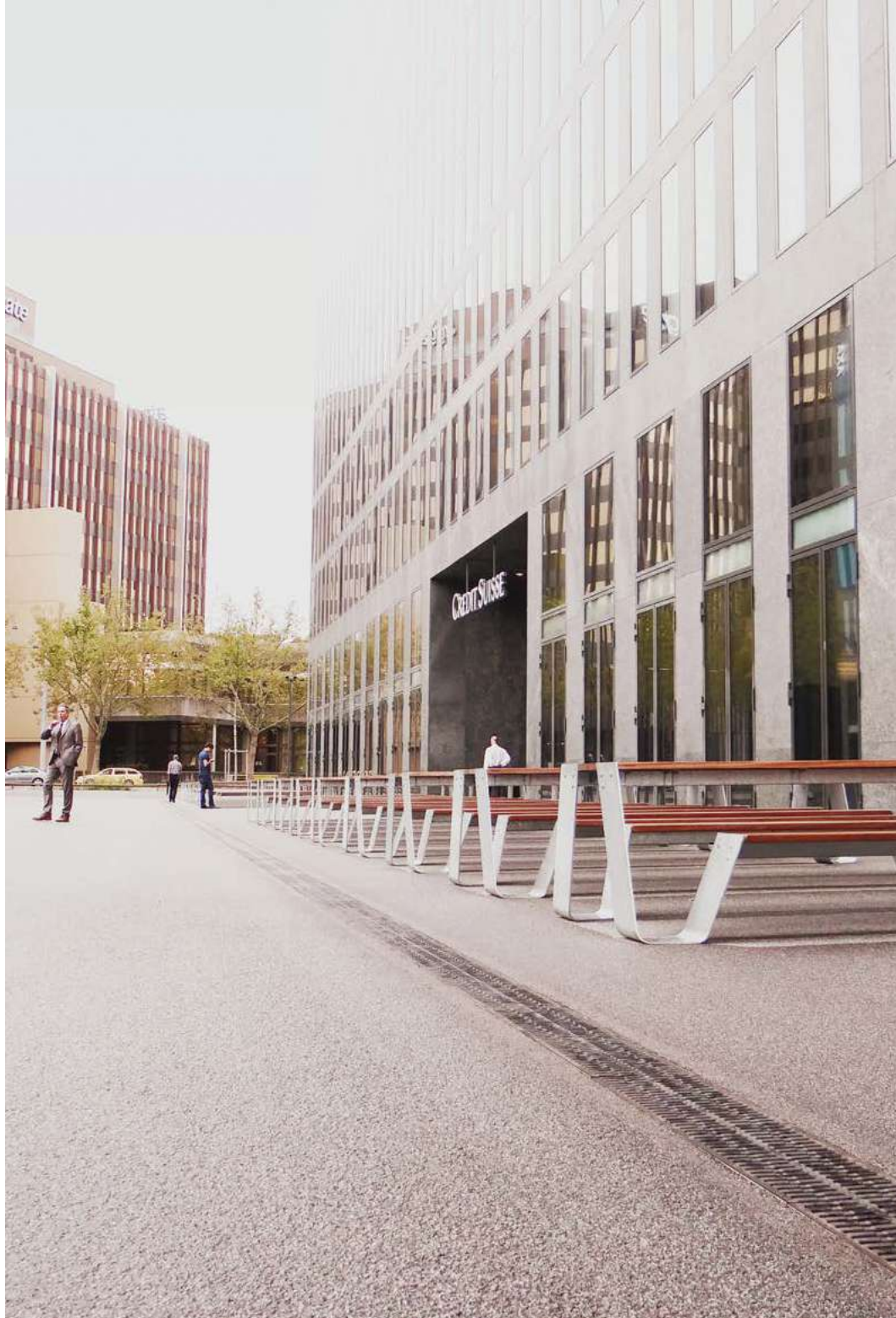
Finding a place to escape the hectic city bustle offers a moment of comfort and rest at any time of day. Instead of leaving public space blank, we can create present-day agoras that foster interaction between people and act as an oasis of calm where they can take a breath of fresh air. Extremis opts for solid timeless design and durable material choices to offer smart, stylish furniture that supports everybody equally and wholeheartedly.





TISTOU
NOISL
キキテル
URBAN TERRACE
FOR TOGETHERNESS
TOOLS
kiteru.site

RESTAURANTS



Wow! The impressive row of 19 **Hopper picnic tables** is almost as mesmerizing as the 'Credit Suisse' office tower. Ten people can fit at one Hopper. So, this public space offers seating for 190 people! That counts, as this is a thriving business spot in Oerlikon, **Zurich, Switzerland**. Not only do business people find their way here, but photographers come to lift their hearts by taking snaps of the fine architectural lines provided by surrounding skyscrapers.



Dairy Block is a must-visit **Denver, Colorado** destination. A stomping ground for tastemakers, fun seekers and seasoned regulars. And a place for ultimate togetherness. No wonder the designer chose to add the **Marina picnic range** as conversation starter. From the enticing atmosphere of The Alley to the local culinary concepts at the Denver Milk Market, Dairy Block comes to life the more you explore.







Loosen your purse and go shopping at the massive 12-story Seibu Ikebukuro commercial center. Also known as the Seibu it is home to Tokyo's largest food hall spanning two floors. Should you get tired, rest your feet at the rooftop garden which is inspired by Claude Monet's landscape paintings. With different Extremis pieces, **Gargantua**, **Abachus**, **Kosmos** with fitting shades, you will easily find a place to enjoy a sunny day high above the noise and crowds.

Designing for all places

A barbecue in the park or a public bench overlooking the mountains? For Extremis, every setting can inspire new designs. We take each new idea on a journey to create the best possible impact for everybody, everywhere.

People in the city, for example, often have to do with less space, but they don't want to compromise on the quality of life. And they don't have to. An awkwardly small space can be a catalyst for change. The Picnik table is perfectly adapted to a confined environment and today's most common family unit: the couple.





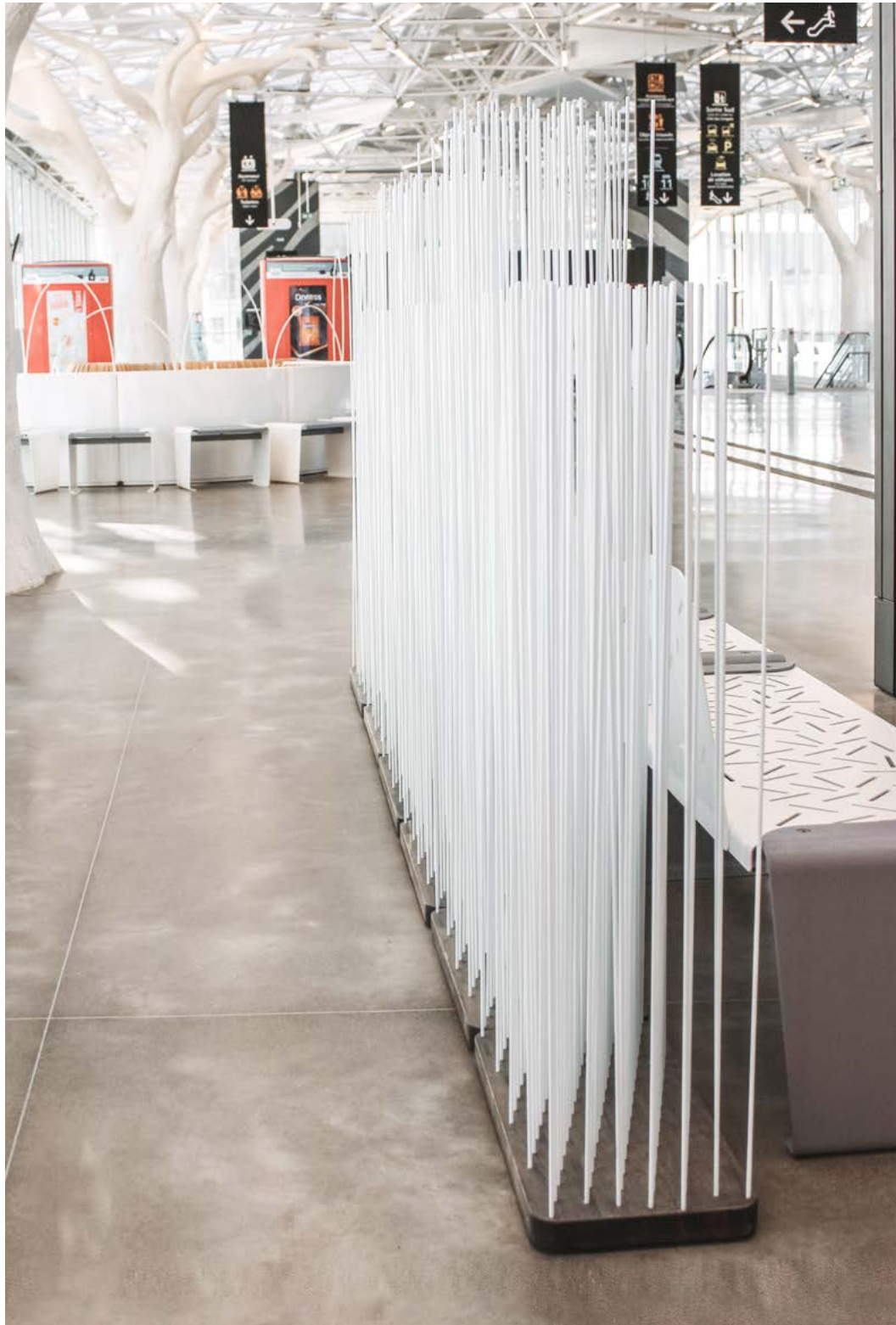
This way of thinking sparked other creations such as the playful and space-conscious Virus table, or the efficient hexagonal Anker. Without taking up too much space, each piece brings people together in a playful and inviting way.

And when we fill a space, it's for a lifetime. Using lasting materials and a solid design, Extremis creates durable, jerk-proof, outdoor furniture that can stay out all year long. Additionally, each table stays put with optional floor fastening, offering resistance to any weather circumstance or to people who might fancy taking our furniture home.



A story of resilience

Just outside a restaurant in Nashville, Texas, you can find two Hopper Benches supporting locals throughout the day. After a destructive tornado hit the town, residents were devastated by the ravage and loss they'd suffered. But even in their despair, they found the strength to carry on and rebuild the city. In the rubble of the restaurant building, they found that these Hopper Benches were still intact and standing strong, just like the people from Nashville. Our hearts go out to all who suffered loss on that day and to the people still affected today. Stand strong. Remain resilient.



Architect Rudy Ricciotti undeniably succeeded in giving **la gare de Nantes** a magnificent facelift. By constructing a footbridge over the train tracks he connected the north and south station while cleverly bringing nature in. The **Anker** tables are perfect for enjoying lunch or waiting for your next train, while white **Sticks** offer some privacy from passers-by. In a busy place like this, it's a luxury to find comfortable seating that brings a moment of peace during the commuting journey. A delayed train? No problem!







Located in the heart of the vibrant neighborhood of Harrison, **New Jersey**, you'll find the Harrison Urby. With the buildings constructed around a large communal landscaped garden that includes vegetable plots, fire pits, and BBQ grills, this urby creates natural opportunities for neighbors to meet. By including **Pantagruel picnic tables**, the space is actively programmed to further foster interactions between residents and neighbors.



Welcome to **Dubai Design District**, a space where the worlds of design, art, and fashion co-exist, where you can discover new perspectives and change ordinary into extraordinary. This interactive ecosystem houses established designers, nurtures emerging creatives, and provides a platform for startups and students to rethink the regular. With views of the famous Burj Khalifa, our **Hoppers with shade** support these trendsetters and forward-thinkers to shape the future of design every day.



777 広島センター街

Welcome to our Restaurants!
美味な橋丁の12店舗へようこそ!!
営業時間 OPEN 10:30 22:00

TSTOU T
#カニハチキテル
MOTOMACHI CRED JUVEN TERRACE

台人社区
紙屋町アネクス

Hiroshima

Unique and safe public seating

How do you bring comfort and rest amid turbulent times? Creating unique and safe seating in unused public spaces is a good start!

Instead of leaving this public space blank in the city of Hiroshima, Japan, we furnished it to let people enjoy some outdoor time in safety. Pick your favorite grass circle and relax in style.

With a pandemic raging around the world, people have to be self-aware when using public space. But with a little imagination we can resolve this and offer safe public spaces. Our agents from Tistou Japan did a perfect job of creating safe outdoor seating circles while also bringing greenery into the city.





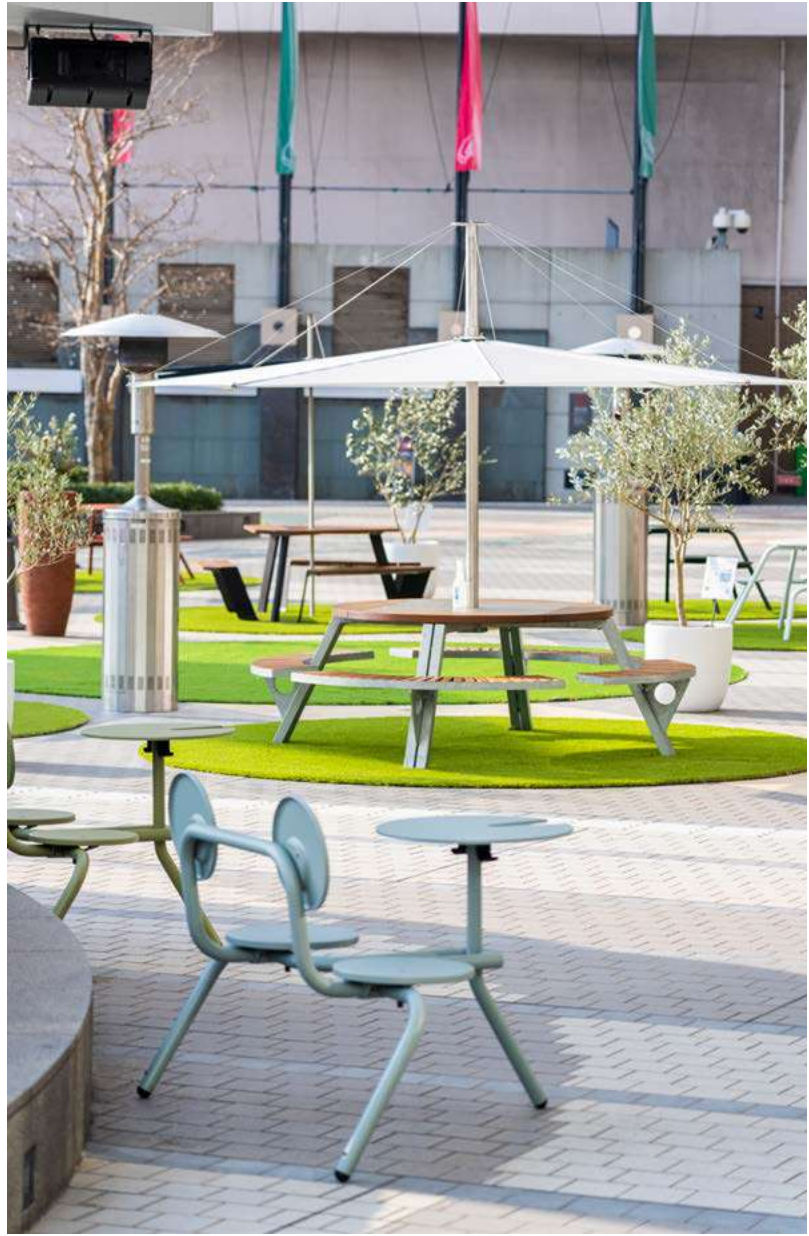






*In this circle, you're
good to enjoy the fresh
air in all safety!*











CHAPTER 6

At Extremis

“Practice what you preach” is a rule we live by. At our headquarters, we blur the lines between indoor and outdoor spaces with lush greenery and extensive use of glazing. With well-being in mind, we push many activities into the open air and promote socialization through thoughtful intentional design. We went from outdoor coffee breaks and after-work drinks to open-air meetings and places for heads-down working. With the right tools, any space becomes energizing.

TOGETHER FOR FITNESS TOOLS



welcome





extremis®



*By blurring the lines
between the indoors
and outdoors,
we set up a natural feel
throughout the campus.*





INTERMEZZO

Leading by example

Our Belgian campus is the beating heart of Extremis. The rural town of Proven is not just where we design, create, and market our products, but where we test, share, and improve them. In this way, our headquarters is much more than just our main office – it is the sandbox for the whole Extremis philosophy.

Making “tools for togetherness” is a serious task, and it’s one we want our employees to perform in comfort; that’s why we are so attentive to well-being at work. By offering connections with nature, opportunities for socialization, and flexibility at work, we create an environment that’s worth the commute.



By following the principles of biophilic design in and around the office, we bring in the calming solace of nature with big windows, the sounds of nature, flowering plants, office animals, and views of the natural world. While around the building, outdoor decks encourage employees to take work, breaks, meetings, or meals in the open-air.

After hours, we make room for togetherness activities between employees. While we're sharing a Tremist, holding yoga sessions, art visits, or going on shared picnics, we are building the Extremis community we love.



While our showroom mainly serves to display our furniture to clients, it is also used to host company events, share knowledge with employees and educate dealers about new designs.

In between collaborating with colleagues, sharing meals, creating new designs, and taking coffee breaks, we test our furniture and fall in love with each piece time and time again.



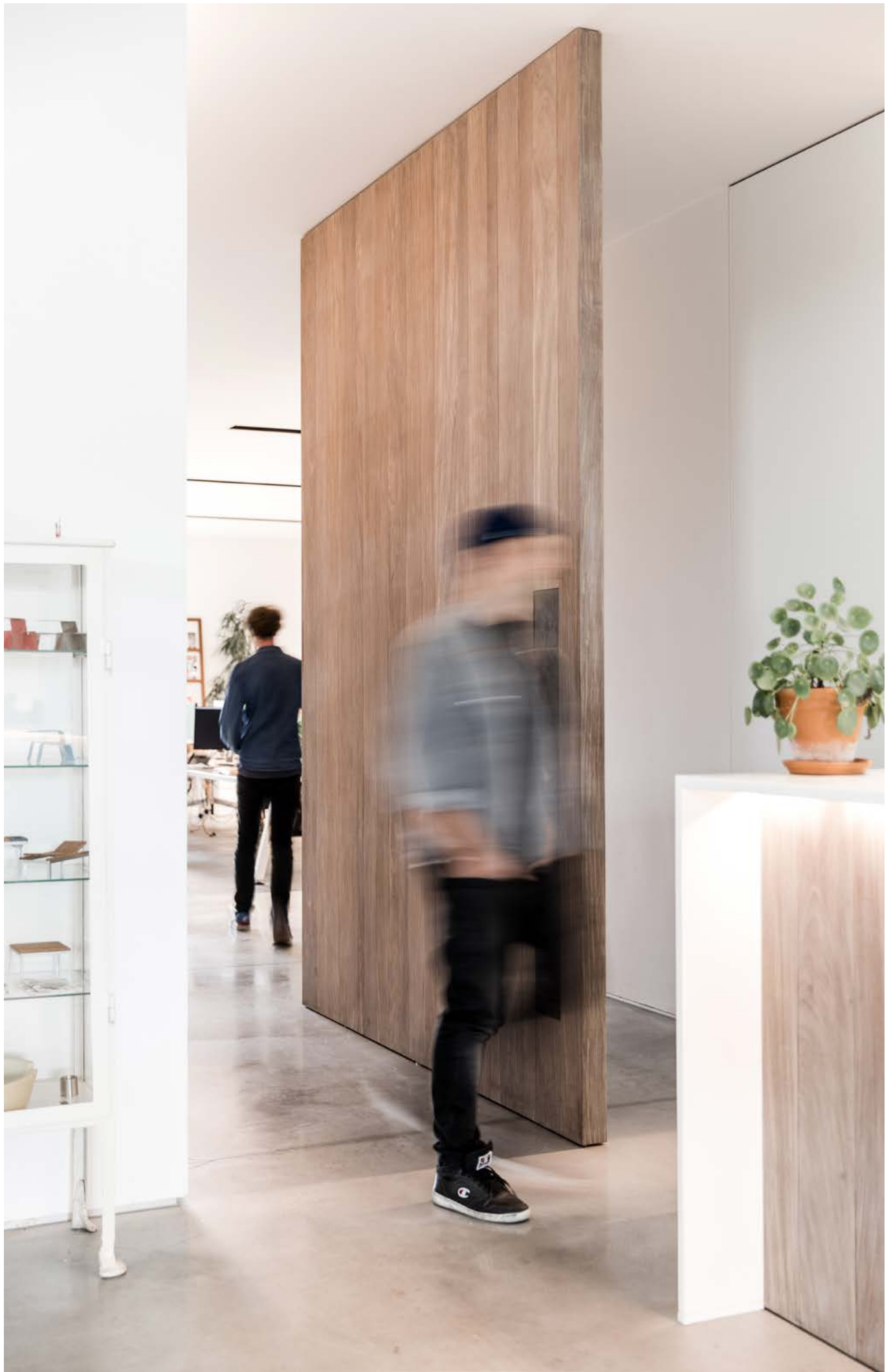




*Designed and made in
Belgium, ready to impact
the whole world.*







*A whole range of
extraordinary outdoor
furniture uniting
exceptional functionality
with timeless design.*







Gargantua

39, 90, 113, 133, 140, 174, 177, 182



Pantagruel

18, 22, 33, 42, 43, 44, 52, 64, 78, 84, 107, 112, 114, 128, 131, 134, 136, 138, 152, 180, 182



Abachus

40, 44, 113, 174



Anker

45, 130, 179, 182



Inumbra

22, 33, 42, 64, 83, 90, 131, 133, 134, 152, 174, 182



Inumbrina

18, 107, 113, 136, 174, 182



Extempore

110



Hopper

21, 30, 32, 42, 45, 48, 52, 64, 86, 90, 92, 106, 112, 113, 114, 129, 142, 146, 172, 177, 181, 182, 202



Hopper AA

12, 20, 205, 211



Hopper shade

21, 42, 142, 146, 181, 182



Marina

19, 24, 25, 128, 130, 140, 150, 152, 173, 177, 199, 200, 206



Captain's Chair

19, 25, 29, 136, 152, 200



Picnik

40, 147, 148, 176, 182, 203



Romeo & Juliet

38, 44, 47



AMAI

27, 28



Tiki

28, 136, 144, 145, 152, 210



Virus

22, 33, 34, 36, 41, 80, 81, 88, 89,
136, 139, 145, 152, 182, 202



Acacia

89, 139



Bistroo

50, 137, 152, 182



Kosmos

31, 37, 91, 174



Kosmos shade

37, 174



Walrus

39, 83



Sticks

49, 51, 141, 149, 178, 211



Configurator

Try out every conceivable color and material combination; your perfect "tool for togetherness" is just one click away!

[Click here](#)

Colophon

EDITOR

Dirk Wynants Design Works
info@dwdw.be

WORDS

Extremis

LAY-OUT

Extremis

COORDINATION

Dirk Wynants

PUBLISHER

Extremis - Hilde Louwagie
hilde@extremis.be

EXTREMIS

Couthoflaan 20b
8972 Poperinge - BELGIUM
+32 57 346020
info@extremis.com
www.extremis.com

IMAGES

Amelie Soenen
Beeldcollectief
Cafeine
Carla Chauvat
Chiaki Asahina/STILB
Clair Obscur
Emanuele Coco
Extremis
Germain Herriau
Georgios Sfakianakis
Jeff Goldberg
John Smith
Jordi Huisman
Katsey.org
Marc Wallican
Monique Shaw
Patrick Van Gelder
Peter Mooney
Peter Würmli
Piet De Kersgieter
Photographil
Rob McConkey
Nonald Zijlstra
Skinn
Tim van de Velde
Verne
Wout Huibers
Wouter van der Sar

All rights reserved. Unless otherwise specified, all designs and photographs contained in this publication are copyright protected and are the property of Extremis. No part of this publication may be copied or distributed without Extremis' prior written consent. The names of the authors of photographs to which we do not hold rights are mentioned here. We have done our utmost to provide a comprehensive list of names. In the event of an alleged breach, please contact the editorial staff.

© Extremis

BE THE FIRST TO KNOW

Facebook
Linkedin
Pinterest
Instagram
Vimeo



